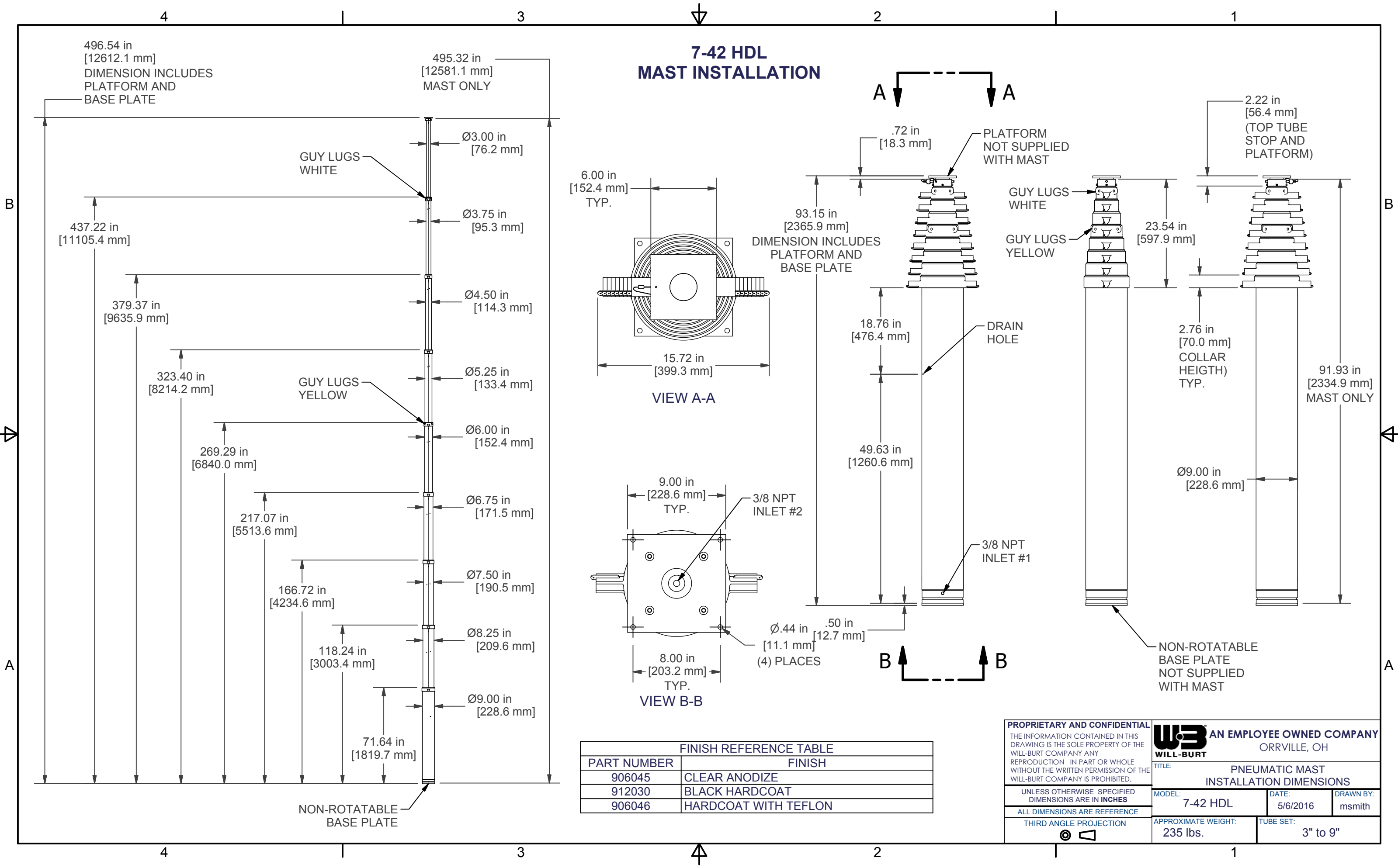


7-42 HDL MAST INSTALLATION



FINISH REFERENCE TABLE	
PART NUMBER	FINISH
906045	CLEAR ANODIZE
912030	BLACK HARDCOAT
906046	HARDCOAT WITH TEFLON

PROPRIETARY AND CONFIDENTIAL
 THE INFORMATION CONTAINED IN THIS DRAWING IS THE SOLE PROPERTY OF THE WILL-BURT COMPANY. ANY REPRODUCTION IN PART OR WHOLE WITHOUT THE WRITTEN PERMISSION OF THE WILL-BURT COMPANY IS PROHIBITED.

WILL-BURT AN EMPLOYEE OWNED COMPANY
 ORRVILLE, OH

TITLE: **PNEUMATIC MAST INSTALLATION DIMENSIONS**

UNLESS OTHERWISE SPECIFIED DIMENSIONS ARE IN INCHES
 ALL DIMENSIONS ARE REFERENCE

THIRD ANGLE PROJECTION

MODEL: 7-42 HDL	DATE: 5/6/2016	DRAWN BY: msmith
APPROXIMATE WEIGHT: 235 lbs.	TUBE SET: 3" to 9"	