

4

3

2

1

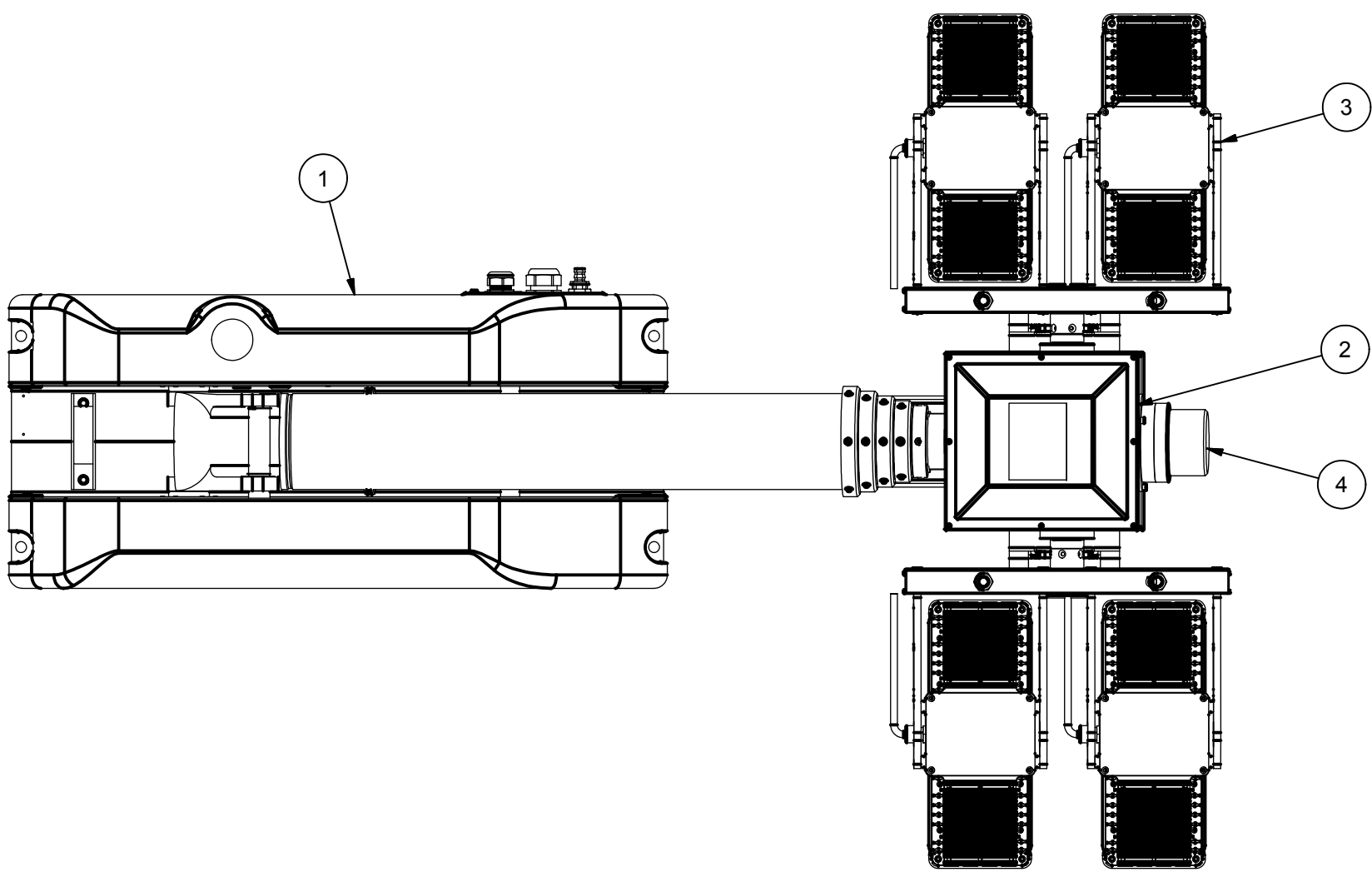
ASSEMBLY NUMBER	DESCRIPTION	ITEM-2	ITEM-3	ITEM-4
721079003	NS 3.0 920 4X230 SPC LED 120VAC	4742501	4810702	NONE
721079007	NS 3.0 920 4X230 SPC LED 120VAC w/GRN STRB	4742505	4810702	4481603
721079011	NS 3.0 1344 4X336 SPC-MAX LED 240VAC	4742501	4810706	NONE
721079035	NS 3.0 1344 4x336 SPC-MAX LED 120VAC	4742501	4810705	NONE
721079012	NS 3.0 920 4X230 SPC LED 240VAC w/GRN STRB	4742505	4810701	4481603
721079036	NS 3.0 1344 4x336 SPC-MAX-S LED 120VAC	4742501	4810707	NONE

REVISION HISTORY				
ECN	REV	DESCRIPTION	DATE	BY/APPR
12955	B	Added P/N 721079011	10/26/2015	RCC
13445	C	Added P/N 721079035	11/28/2016	RCC
13696	D	Added P/N 721079012	7/18/2017	RCC
14006	E	Added P/N 721079036	5/16/2018	RCC



B

B



NOTES:

- 1 APPLY RTV #739 OR EQUAL TO ALL OPEN HOLES
- 2 SEE WIRING DIAGRAM WD-46276 FOR WIRING DETAILS
- 3 SET LIGHT BARS HOME POSITION PARALLEL TO BASE PLATE WHEN STOWED
- 4 APPLY LOCTITE #243 OR EQUAL TO ALL THREADS UNLESS OTHERWISE NOTED
- 5 APPLY A COAT OF SILICONE GREASE TO RCP MOTOR BORES PRIOR TO SHAFTS BEING INSTALLED

BOM			
ITEM	QTY	PART NUMBER	DESCRIPTION
1	1	4627603	BASE ASSEMBLY POWERLITE 10 FT CLR
2	1	SEE TABLE	RCP ASSEMBLY NSP
3	1	SEE TABLE	4 SPECTRA LED LIGHTS
4	1	SEE TABLE	STROBE LIGHT KIT
5	1	4706703	NSP LABEL KIT CE (NOT SHOWN)
6	1	4807801	KIT, SHIPPING NSP (NOT SHOWN)
7	1	WD-46276	WIRING DIAGRAM (NOT SHOWN)

A

A

UNLESS OTHERWISE SPECIFIED  
DIMENSIONS ARE IN INCHES.

TOLERANCES ON DECIMALS    ANGLES  
 0 = ± 0.030                      ± 1/2°  
 00 = ± 0.010  
 000 = ± 0.005

FRACTIONAL ± 1/64"  
 1. ALL INSIDE EDGES TO HAVE  
 .005" TO .035" FILLETS.  
 2. ALL OUTSIDE EDGES TO HAVE  
 .005" TO .015" CHAMFER OR RADIUS.  
 125° ON ALL MACHINED SURFACES

APPROX. WT:170.4 lbmass

THIRD ANGLE PROJECTION



**PROPRIETARY AND CONFIDENTIAL**

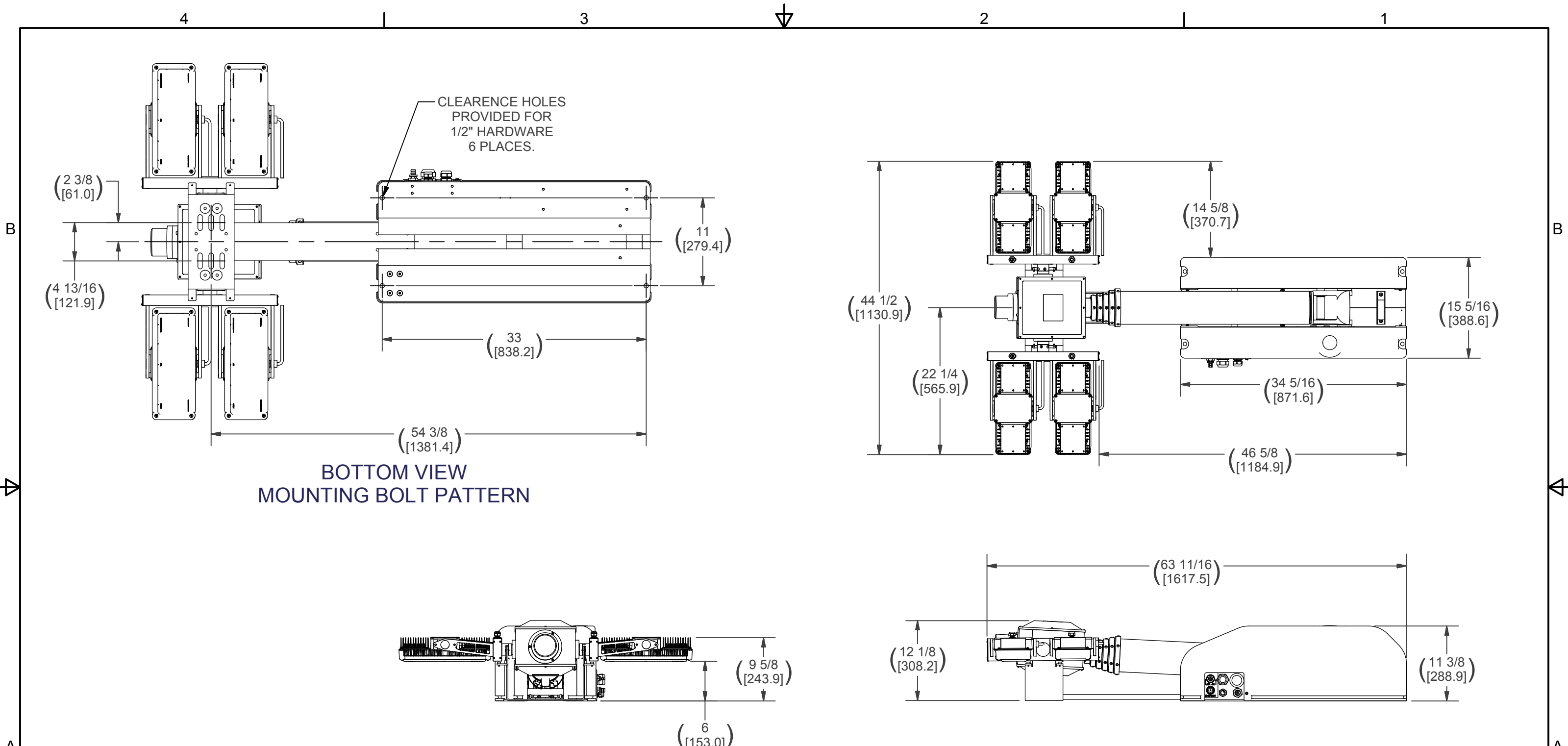
THE INFORMATION CONTAINED IN THIS DRAWING IS THE SOLE PROPERTY OF THE WILL-BURT COMPANY ANY REPRODUCTION IN PART OR WHOLE WITHOUT THE WRITTEN PERMISSION OF THE WILL-BURT COMPANY IS PROHIBITED.



TITLE  
**NS 3.0 4-SPECTRA LED's VAC**

APPROVALS	DATE
DRAWN RCC	5/7/2012
CHECKED	

SIZE	DWG NO	REV
B	721079003	E
PN: SEE ABOVE		SHEET 1 OF 2



NOTES:  
SECONDARY DIMENSIONS - MILLIMETERS NOTED IN BRACKETS

APPROX. WT:170.4 lbmass

THIRD ANGLE PROJECTION



UNLESS OTHERWISE SPECIFIED DIMENSIONS ARE IN INCHES.

TOLERANCES ON DECIMALS    ANGLES  
 0 = ± 0.030                    ± 1/2°  
 00 = ± 0.010  
 000 = ± 0.005

FRACTIONAL ± 1/64"

1. ALL INSIDE EDGES TO HAVE .005" TO .035" FILLETS.  
 2. ALL OUTSIDE EDGES TO HAVE .005" TO .015" CHAMFER OR RADIUS.

125° ON ALL MACHINED SURFACES

<b>PROPRIETARY AND CONFIDENTIAL</b>	
THE INFORMATION CONTAINED IN THIS DRAWING IS THE SOLE PROPERTY OF THE WILL-BURT COMPANY ANY REPRODUCTION IN PART OR WHOLE WITHOUT THE WRITTEN PERMISSION OF THE WILL-BURT COMPANY IS PROHIBITED.	
APPROVALS	DATE
DRAWN RCC	5/7/2012
CHECKED	

<b>W3</b> WILL-BURT		AN EMPLOYEE OWNED COMPANY ORRVILLE, OH	
TITLE <b>NS 3.0 4-SPECTRA LED's VAC</b>			
SIZE B	DWG NO 721079003	REV E	
PN: SEE ABOVE	SHEET 2 OF 2		