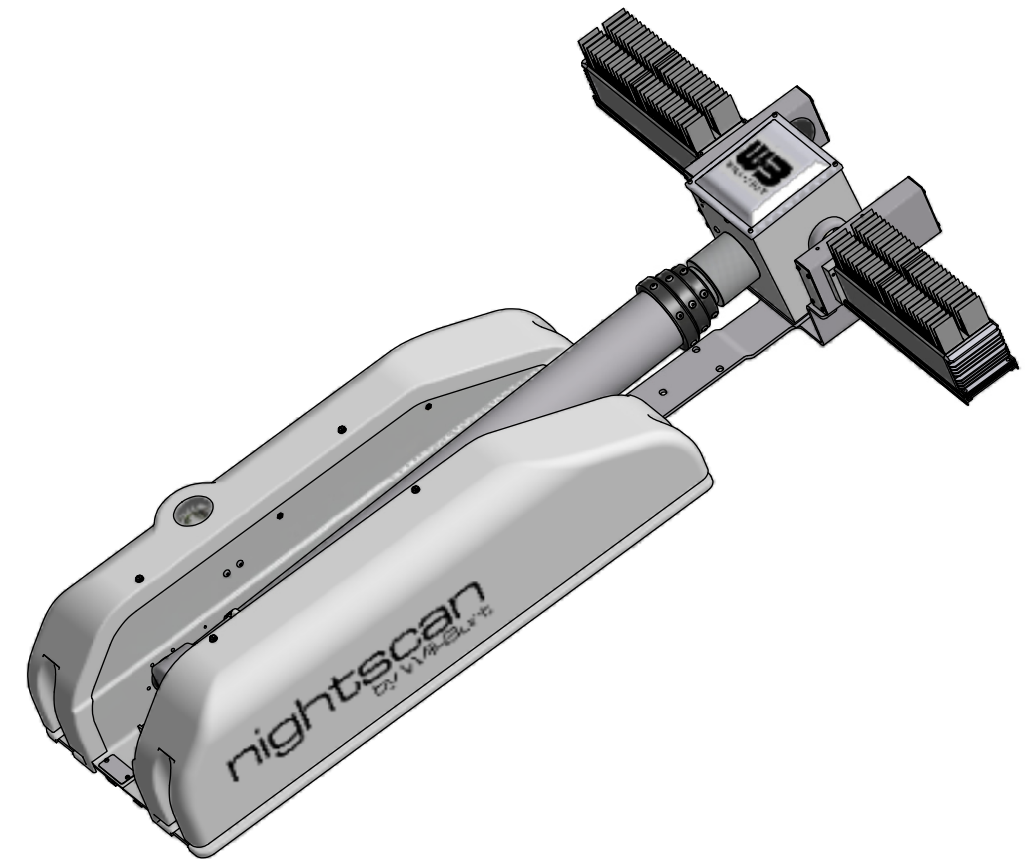


REVISION HISTORY				
ECN	REV	DESCRIPTION	DATE	BY/APPR
12510	S	RESTRUCTURED BOM	12/19/2014	RCC
12580	T	CHANGED NOTE TWO TO REFERENCE DRAWING WD-46276	3/31/2015	KWBH



BOM			
ITEM	QTY	PART NUMBER	DESCRIPTION
1	1	4522001	BASE ASSEMBLY, 7.5 CLR
2	1	4548301	NSC RCP, LIGHTS ONLY
3	1	4596602	FRC LED 2 LT, 320W (2-160W 12/24VDC) WHT
4	1	4558901	NSC LABEL KIT (NOT SHOWN)
5	1	TP-4602001	MANUAL, NS 1.8/2.3, CE, CD VERSION (NOT SHOWN)

NOTES:

- 1 APPLY RTV #739 OR EQUAL TO ALL OPEN HOLES.
- 2 SEE WIRING DIAGRAM WD-46276 FOR ALL UNITS.
- 3 SET LIGHT BARS HOME POSITION PARALLEL TO BASE PLATE WHEN STOWED.

MATERIAL	UNLESS OTHERWISE SPECIFIED DIMENSIONS ARE IN INCHES.
FINISH	TOLERANCES ON DECIMALS ANGLES 0 = ± 0.030 ± 1/2° 00 = ± 0.010 000 = ± 0.005
APPROX. WT:N/A	FRACTIONAL ± 1/64" 1. ALL INSIDE EDGES TO HAVE .005" TO .035" FILLETS. 2. ALL OUTSIDE EDGES TO HAVE .005" TO .015" CHAMFER OR RADIUS.
THIRD ANGLE PROJECTION	125° ON ALL MACHINED SURFACES

PROPRIETARY AND CONFIDENTIAL THE INFORMATION CONTAINED IN THIS DRAWING IS THE SOLE PROPERTY OF THE WILL-BURT COMPANY ANY REPRODUCTION IN PART OR WHOLE WITHOUT THE WRITTEN PERMISSION OF THE WILL-BURT COMPANY IS PROHIBITED.	
APPROVALS	DATE
DRAWN SMB	3/1/2011
CHECKED	

WILL-BURT AN EMPLOYEE OWNED COMPANY ORRVILLE, OH	
TITLE NS 2.3-300-2 FRC LED 24VDC	
SIZE B	DWG NO 720711340
PN: 720711340	REV T
SHEET 1 OF 1	