

REVISION HISTORY				
ECN	REV	DESCRIPTION	DATE	APPROVED
11803	C	REMOVED PARTS 4465801 AND 4710801	10/11/2013	CJY
12183	D	UPDATE COMPRESSOR & SCREW, ADD WASHER & NOTE 8	6/3/2014	SRW/
12648	E	Added 4596601 Light Kit to BOM	4/3/2015	RCC

BOM				BOM			
ITEM	QTY	PART NUMBER	DESCRIPTION	ITEM	QTY	PART NUMBER	DESCRIPTION
1	1	4853301	NSC VRT MAST ASSY 7.5 FT CLR	27	4	3609	CS M6-1.00 X 12.0 Hex HD SSTL
2	1	4548301	NSC RCP, LIGHTS ONLY	28	2	3390	Phil Pan H M S M4 x .7 X 20
3	1	4853701	BASE ENCLOSURE	29	4	3684	NUT NYLOCK M4-0.70 HX SSTL
4	1	4596601	FRC LED 2 LT, 180W (2-90W 12/24VDC) WHT	30	1	3435	Grommet MS35489 - 40
5	2	4853801	BRACKET ASM, NSC VRT MAST	31	3	4287	NUT LOCK 1/2 NPT NYLN
6	1	4845801	BRACKET, COMPRESSOR MOUNT	32	1	4484	NUT LOCK 3/8 NPT HX BLK NYLN
7	1	4558201	COMPRESSOR ASSEMBLY FOR NSC	33	1	4417	NUT LOCK 1" NPT HX BLK NYLN
8	1	4311701	NS 1.8/2.3 CE/RF Base Control Board	34	4	3017	FW M4 SSTL
9	1	4854101	COVER, BASE ENCLOSURE	35	4	3489	PHPMS M4 -.7 X 16mm SSTL
10	1	4854601	CLAMP, VRT NSC	36	14	3041	WSHR FLT M6.4X12.0X1.8 18-8 SSTL
11	1	4854501	CROSS BRACE, VRT NSC	37	10	4332	NUT LOCK M6-1.00 HX SSTL
12	1	213018	CONN TERM BLOCK PLUG 9POS 5.08MM	38	1	000051-000-006	TAPE FOAM STICKY (Not Shown)
13	1	911964	COUPLING, ANCHOR, 1/4 NPT BLKHD	39	1	4565001	TUBING, RD .375 OD X .245 ID X 28" (NOT SHOWN)
14	1	4024001	Push Connector Fitting 1/4" NPT-3/8 OD Hose, Straight	40	18"	901308	TUBING 3/8 OD POLYETHYLENE (NOT SHOWN)
15	1	4024002	Push Connect Fitting 1/4 NPT-3/8 OD Hose	41	1	4599101	NSC BASE WIRING HARNESS (NOT SHOWN)
16	1	215004	Ground Bar 7-POS	42	2	211001	FERRITE, 0.709" (SHIP LOOSE)
17	1	915543	12" Long Lanyard-Eye Each End SSTL	43	1	211002	FERRITE, 0.388" (NOT SHOWN)
18	1	4029103	Strain Relief-90 Deg. Elbow 1/2" NPT (.39-.55)	44	1	4332901	GROUND EARTH LABEL (NOT SHOWN)
19	1	4029102	Strain Relief-90 Deg. Elbow 1/2" NPT	45	4	213052	TERMINAL, FERRULE 12 GA (NOT SHOWN)
20	1	4022401	Strian Relief 1/2" NPT	46	17	901167	TERMINAL CONTACT (NOT SHOWN)
21	1	901655	Strain Relief, Sealcon CD 21 NR-BK	47	1	000013-207-003	HOUSING 7-PIN (NOT SHOWN)
22	1	4416	STRAIN RELIEF 1" NPT .71-.98 BLK NYLON	48	1	000013-208-000	HOUSING 8-PIN (NOT SHOWN)
23	2	913623	Mag Switch Bracket	49	1	213023	HOUSING 9-PIN (NOT SHOWN)
24	8	4374	WSHR FLT X2MM M6 SSTL	50	1	4564101	CABLE TIE 11" X .189" 40LB NYLON NATURA
25	4	4322	SHCS M6 X 1.00 x 14 SSTL	51	1	WD-87040	WIRING DIAGRAM (NOT SHOWN)
26	4	3574	SBHCS M5 x 16 SSTL	52	4	4333	SCR CAP M6-1.00X20.0 SC HD SSTL



APPROX. WT:

THIRD ANGLE PROJECTION



**UNLESS OTHERWISE SPECIFIED DIMENSIONS ARE IN INCHES.**  
TOLERANCES ON DECIMALS ANGLES  
0 = ± 0.030 ± 1/2°  
00 = ± 0.010  
000 = ± 0.005  
FRACTIONAL ± 1/64"  
1. ALL INSIDE EDGES TO HAVE .005" TO .035" FILLETS.  
2. ALL OUTSIDE EDGES TO HAVE .005" TO .015" CHAMFER OR RADIUS.  
125 ON ALL MACHINED SURFACES

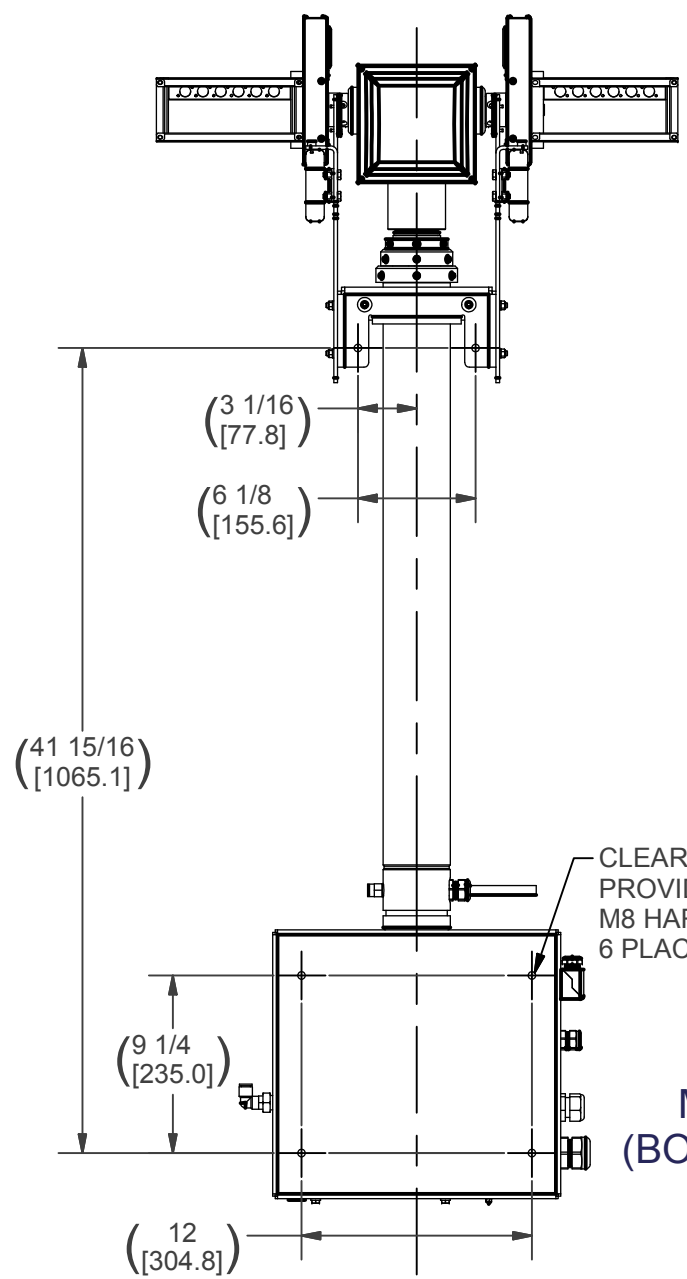
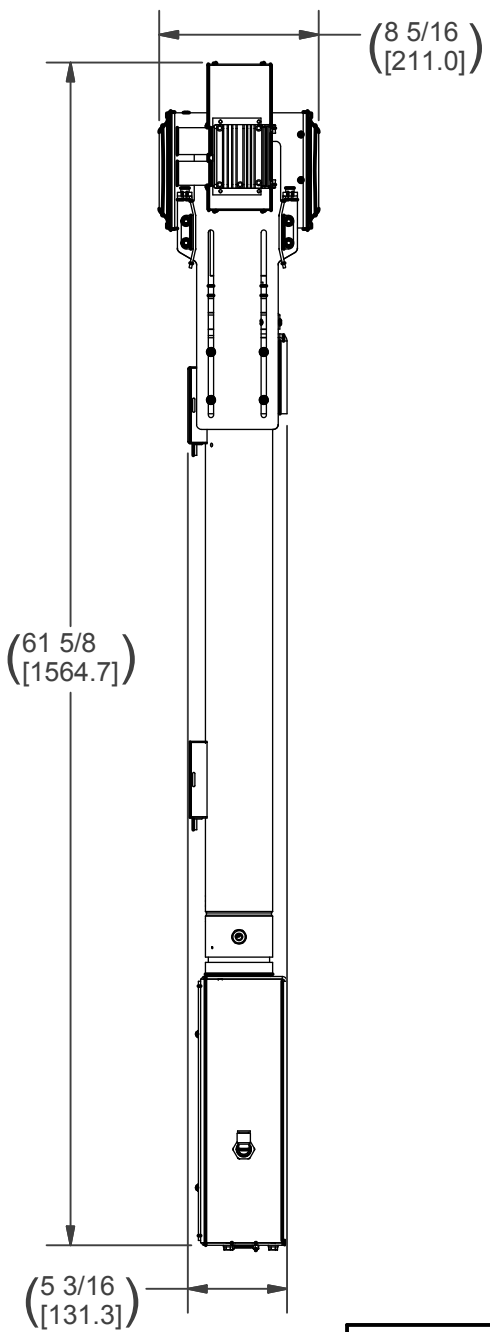
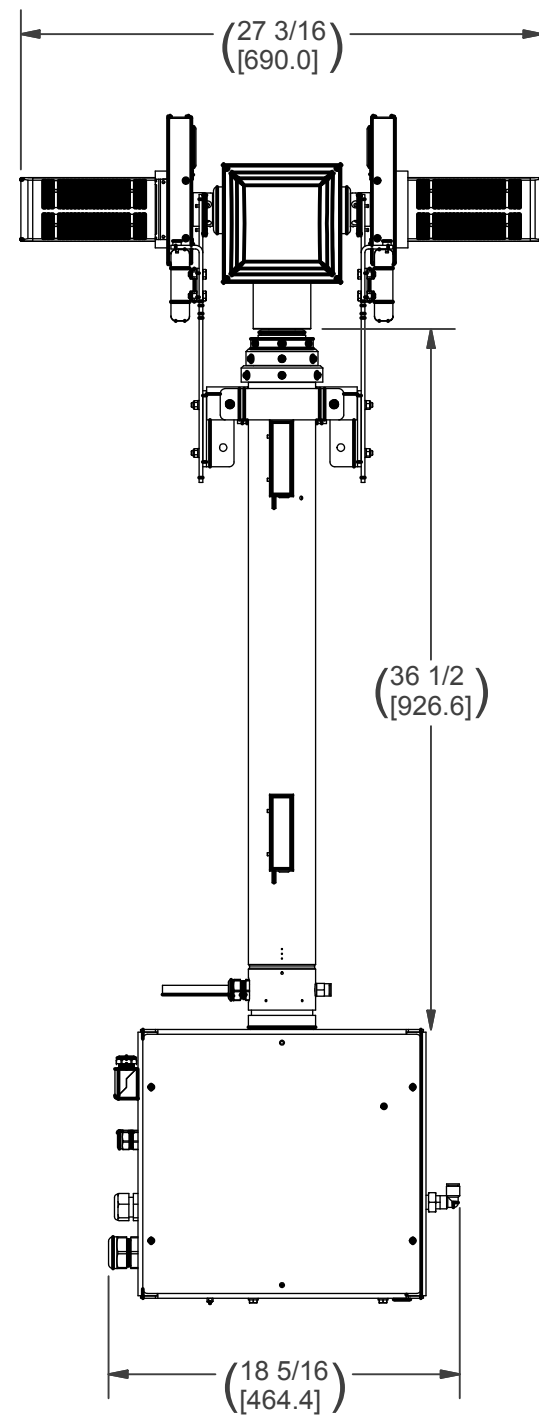
**PROPRIETARY AND CONFIDENTIAL**  
THE INFORMATION CONTAINED IN THIS DRAWING IS THE SOLE PROPERTY OF THE WILL-BURT COMPANY ANY REPRODUCTION IN PART OR WHOLE WITHOUT THE WRITTEN PERMISSION OF THE WILL-BURT COMPANY IS PROHIBITED.



TITLE  
**VRT ASM 180W (2)X90  
12/24V NSC 7.5**

APPROVALS	DATE
DRAWN RCC	9/25/2012
CHECKED	

SIZE	DWG NO	REV
B	720087040	E
PN:		SHEET 1 OF 4



CLEARANCE HOLES PROVIDED FOR M8 HARDWARE 6 PLACES.

**MOUNTING (BOLT PATTERN)**

APPROX. WT:58.0 lbmass

THIRD ANGLE PROJECTION



**UNLESS OTHERWISE SPECIFIED DIMENSIONS ARE IN INCHES.**  
 TOLERANCES ON DECIMALS ANGLES  
 0 = ± 0.030 ± 1/2°  
 00 = ± 0.010  
 000 = ± 0.005  
 FRACTIONAL ± 1/64"  
 1. ALL INSIDE EDGES TO HAVE .005" TO .035" FILLETS.  
 2. ALL OUTSIDE EDGES TO HAVE .005" TO .015" CHAMFER OR RADIUS.  
 125° ON ALL MACHINED SURFACES

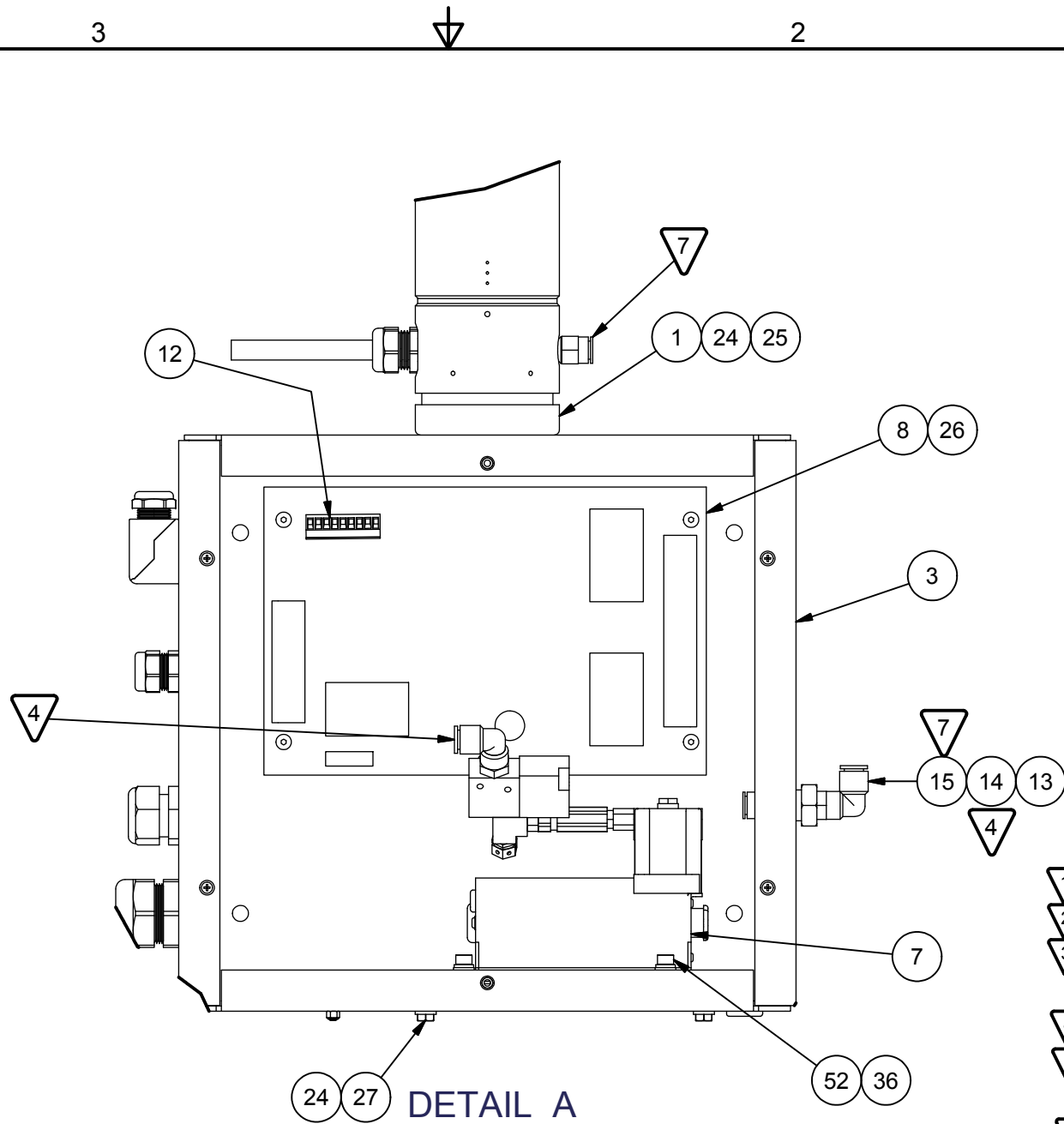
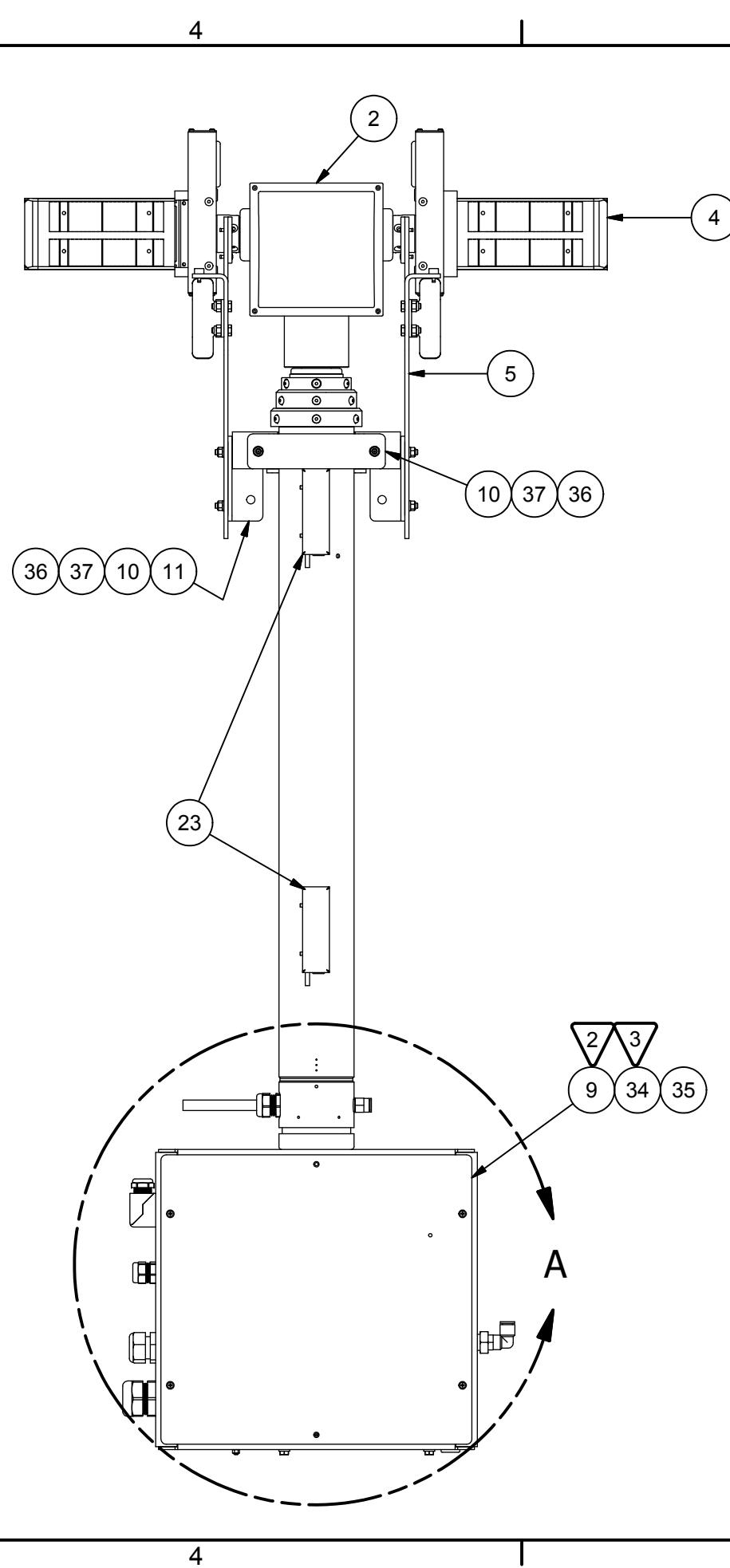
**PROPRIETARY AND CONFIDENTIAL**  
 THE INFORMATION CONTAINED IN THIS DRAWING IS THE SOLE PROPERTY OF THE WILL-BURT COMPANY ANY REPRODUCTION IN PART OR WHOLE WITHOUT THE WRITTEN PERMISSION OF THE WILL-BURT COMPANY IS PROHIBITED.

**W3** AN EMPLOYEE OWNED COMPANY  
 WILL-BURT ORRVILLE, OH

TITLE  
**VRT ASM 180W (2)X90  
 12/24V NSC 7.5**

APPROVALS	DATE
DRAWN RCC	9/25/2012
CHECKED	

SIZE B	DWG NO 720087040	REV E
PN: 720087040	SHEET 2 OF 4	



- NOTES:
- 1 APPLY LOCTITE #242 TO THREADS.
  - 2 NOTE COVER ORIENTATION.
  - 3 ATTACH LANYARD TO BACK OF COVER, ROUTE CABLE AWAY FROM AIR LINE.
  - 4 CUT PART NUMBER 4565001 TO FIT (APPROX 8")
  - 5 CUT 3-INCHES OF 4565001 TO BE PLACE IN GROMMET, LEAVE ONLY 1-INCH EXIT GROMMET
  - 6 APPLY LOCTITE #380.
  - 7 CUT PART NUMBER 901308 TO FIT.

APPROX. WT:58.0 lbmass  
 THIRD ANGLE PROJECTION

UNLESS OTHERWISE SPECIFIED  
 DIMENSIONS ARE IN INCHES.  
 TOLERANCES ON DECIMALS ANGLES  
 0 = ± 0.030 ± 1/2°  
 00 = ± 0.010  
 000 = ± 0.005  
 FRACTIONAL ± 1/64"  
 1. ALL INSIDE EDGES TO HAVE  
 .005" TO .035" FILLETS.  
 2. ALL OUTSIDE EDGES TO HAVE  
 .005" TO .015" CHAMFER OR RADIUS.  
 125° ON ALL MACHINED SURFACES

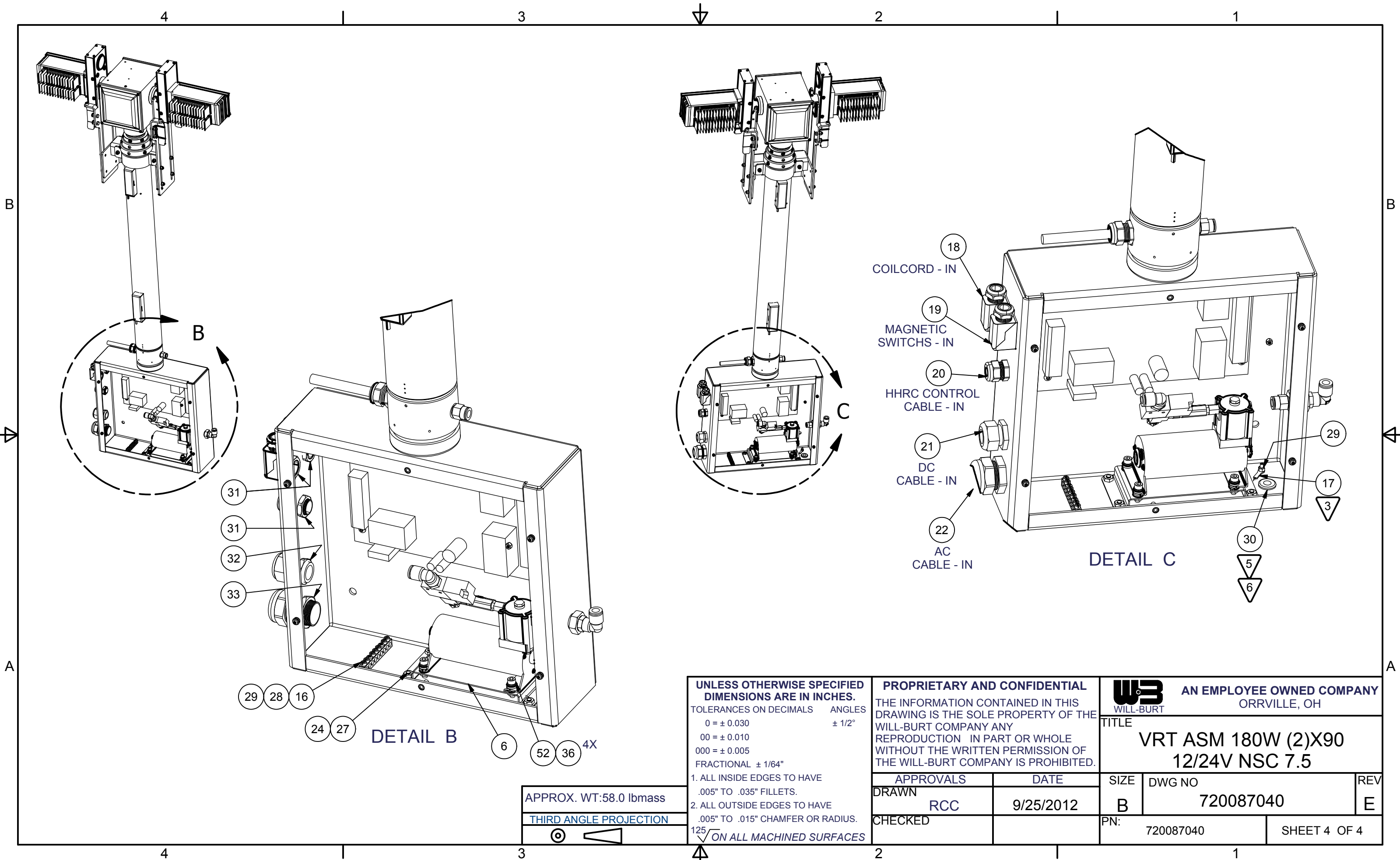
**PROPRIETARY AND CONFIDENTIAL**  
 THE INFORMATION CONTAINED IN THIS  
 DRAWING IS THE SOLE PROPERTY OF THE  
 WILL-BURT COMPANY ANY  
 REPRODUCTION IN PART OR WHOLE  
 WITHOUT THE WRITTEN PERMISSION OF  
 THE WILL-BURT COMPANY IS PROHIBITED.

APPROVALS	DATE
DRAWN RCC	9/25/2012
CHECKED	

**W3** AN EMPLOYEE OWNED COMPANY  
 WILL-BURT ORRVILLE, OH

TITLE  
**VRT ASM 180W (2)X90  
 12/24V NSC 7.5**

SIZE B	DWG NO 720087040	REV E
PN: 720087040	SHEET 3 OF 4	



UNLESS OTHERWISE SPECIFIED  
**DIMENSIONS ARE IN INCHES.**  
 TOLERANCES ON DECIMALS ANGLES  
 0 = ± 0.030 ± 1/2°  
 00 = ± 0.010  
 000 = ± 0.005  
 FRACTIONAL ± 1/64"  
 1. ALL INSIDE EDGES TO HAVE  
 .005" TO .035" FILLETS.  
 2. ALL OUTSIDE EDGES TO HAVE  
 .005" TO .015" CHAMFER OR RADIUS.  
 125° ON ALL MACHINED SURFACES

**PROPRIETARY AND CONFIDENTIAL**  
 THE INFORMATION CONTAINED IN THIS  
 DRAWING IS THE SOLE PROPERTY OF THE  
 WILL-BURT COMPANY ANY  
 REPRODUCTION IN PART OR WHOLE  
 WITHOUT THE WRITTEN PERMISSION OF  
 THE WILL-BURT COMPANY IS PROHIBITED.

**WB** AN EMPLOYEE OWNED COMPANY  
 WILL-BURT ORRVILLE, OH

TITLE  
**VRT ASM 180W (2)X90  
 12/24V NSC 7.5**

APPROX. WT:58.0 lbmass

THIRD ANGLE PROJECTION

APPROVALS	DATE
DRAWN RCC	9/25/2012
CHECKED	

SIZE	DWG NO	REV
B	720087040	E
PN:	720087040	SHEET 4 OF 4