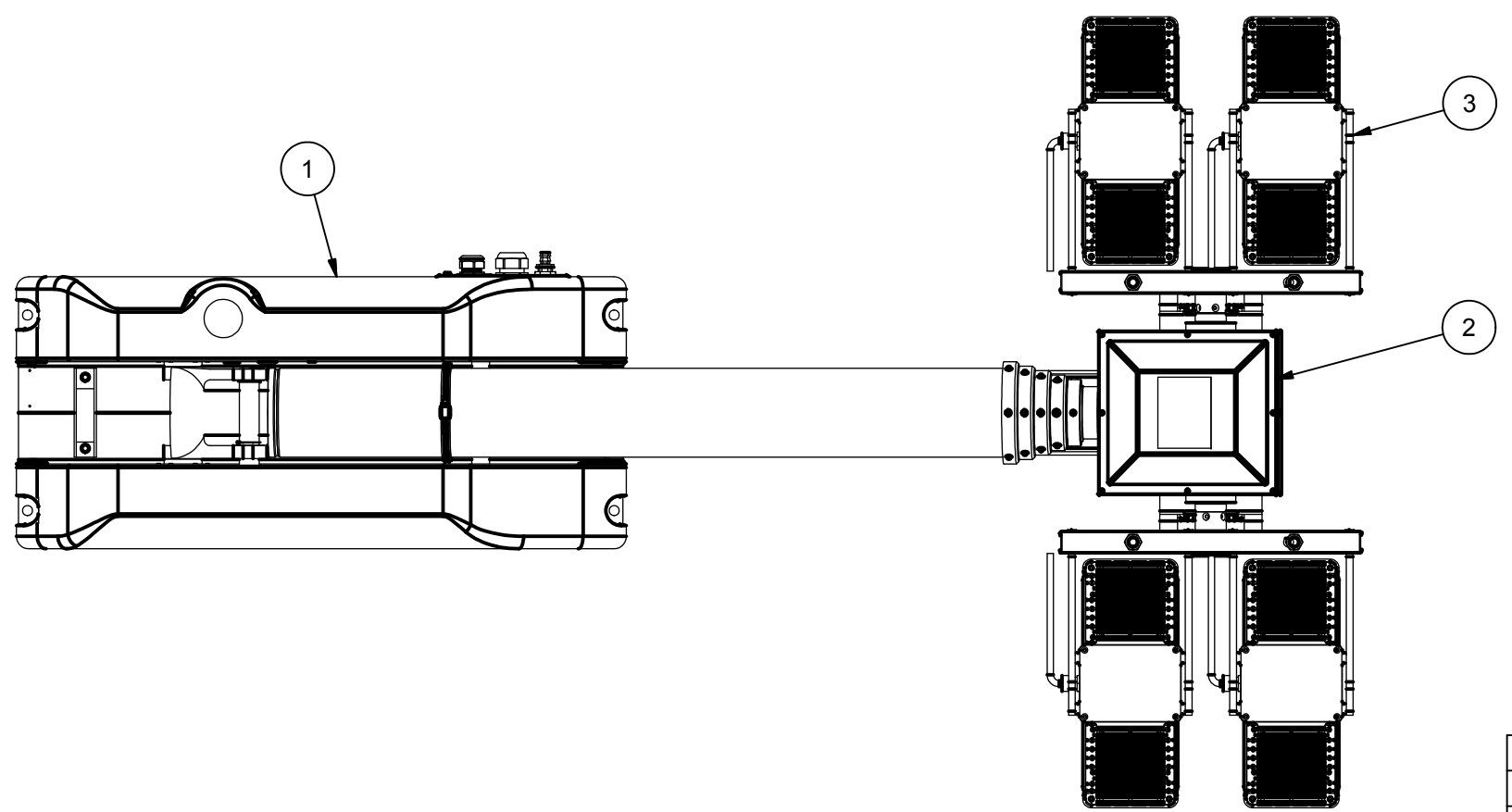


REVISION HISTORY				
ECN	REV	DESCRIPTION	DATE	BY/APPR
13985	00	INITIAL RELEASE	5/2/2018	RCC



NOTES:

- 1 APPLY RTV #739 OR EQUAL TO ALL OPEN HOLES
- 2 SEE WIRING DIAGRAM WD-46276 FOR WIRING DETAILS
- 3 SET LIGHT BARS HOME POSITION PARALLEL TO BASE PLATE WHEN STOWED
- 4 APPLY LOCTITE #243 OR EQUAL TO ALL THREADS UNLESS OTHERWISE NOTED
- 5 APPLY A COAT OF SILICONE GREASE TO RCP MOTOR BORES PRIOR TO SHAFTS BEING INSTALLED
- 6 INSTALL GROUND WIRE ASSEMBLY TO BOARD AND RCP HOUSING.
- 7 ALL WIRING DIAGRAMS TO BE SUPPLIED WITH SALES ORDER.
- 8 5451601 TO BE INSTALLED BY THE CUSTOMER.

BOM			
ITEM	QTY	PART NUMBER	DESCRIPTION
1	1	4627601	BASE ASSEMBLY NSP 15 FT. CLR ADZ
2	1	4742501	RCP ASSEMBLY NSP STD
3	1	4810707	SPECTRA MAX-S 1344W (4X336W)120VAC WHT
4	1	4706703	NSP LABEL KIT CE (NOT SHOWN)
5	1	4807801	KIT, SHIPPING NSP (NOT SHOWN)
6	1	5451601	KIT, DUAL 1500 INVERTERS 12DC TO 120VAC (NOT SHOWN)
7	1	WD-46276	WIRING DIAGRAM (NOT SHOWN)
8	1	WD-54516	INVERTER WIRING DIAGRAM (NOT SHOWN)

APPROX. WT:173.7 lbmass

THIRD ANGLE PROJECTION



UNLESS OTHERWISE SPECIFIED DIMENSIONS ARE IN INCHES.

TOLERANCES ON DECIMALS ANGLES
0 = ± 0.030 ± 1/2°
00 = ± 0.010
000 = ± 0.005

FRACTIONAL ± 1/64"

1. ALL INSIDE EDGES TO HAVE .005" TO .035" FILLETS.
2. ALL OUTSIDE EDGES TO HAVE .005" TO .015" CHAMFER OR RADIUS.

125° ON ALL MACHINED SURFACES

PROPRIETARY AND CONFIDENTIAL

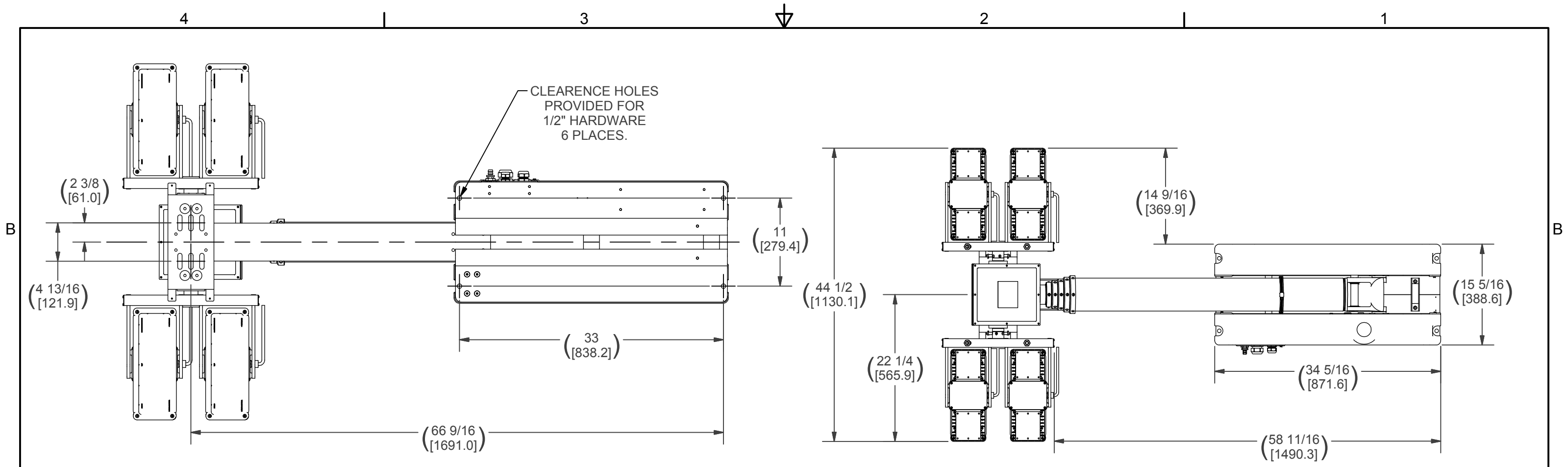
THE INFORMATION CONTAINED IN THIS DRAWING IS THE SOLE PROPERTY OF THE WILL-BURT COMPANY ANY REPRODUCTION IN PART OR WHOLE WITHOUT THE WRITTEN PERMISSION OF THE WILL-BURT COMPANY IS PROHIBITED.

WILL-BURT AN EMPLOYEE OWNED COMPANY
ORRVILLE, OH

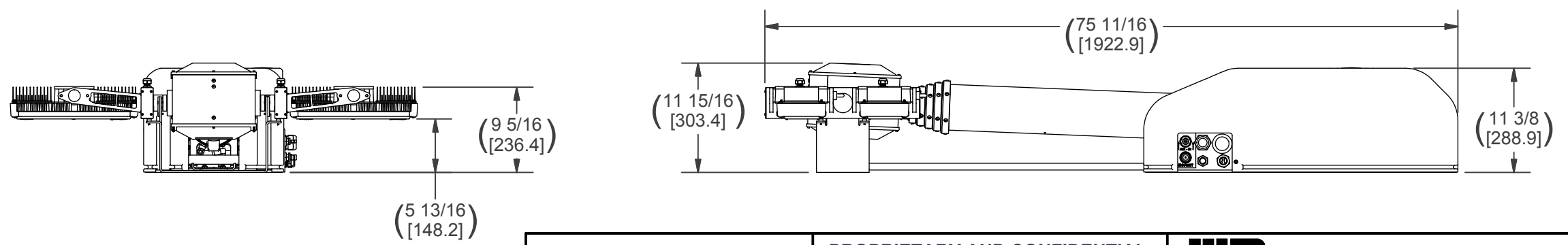
TITLE
**NS 4.5 1344W 4X336-120VAC
SPC-MAX INVRTR 12VDC**

APPROVALS	DATE
DRAWN RCC	5/2/2018
CHECKED	

SIZE	DWG NO	REV
B	721599033	00
PN: 721599033		SHEET 1 OF 2



**BOTTOM VIEW
MOUNTING BOLT PATTERN**




NOTES:
SECONDARY DIMENSIONS - MILLIMETERS NOTED IN BRACKETS

APPROX. WT:173.7 lbmass
THIRD ANGLE PROJECTION

UNLESS OTHERWISE SPECIFIED
DIMENSIONS ARE IN INCHES.
TOLERANCES ON DECIMALS ANGLES
0 = ± 0.030 ± 1/2°
00 = ± 0.010
000 = ± 0.005
FRACTIONAL ± 1/64"
1. ALL INSIDE EDGES TO HAVE
.005" TO .035" FILLETS.
2. ALL OUTSIDE EDGES TO HAVE
.005" TO .015" CHAMFER OR RADIUS.
125° ON ALL MACHINED SURFACES

PROPRIETARY AND CONFIDENTIAL
THE INFORMATION CONTAINED IN THIS
DRAWING IS THE SOLE PROPERTY OF THE
WILL-BURT COMPANY ANY REPRODUCTION
IN PART OR WHOLE WITHOUT THE WRITTEN
PERMISSION OF THE WILL-BURT COMPANY IS
PROHIBITED.

APPROVALS	DATE
DRAWN RCC	5/2/2018
CHECKED	

 AN EMPLOYEE OWNED COMPANY ORRVILLE, OH	
TITLE NS 4.5 1344W 4X336-120VAC SPC-MAX INVRTR 12VDC	
SIZE B	DWG NO 721599033
PN: 721599033	REV 00
SHEET 2 OF 2	