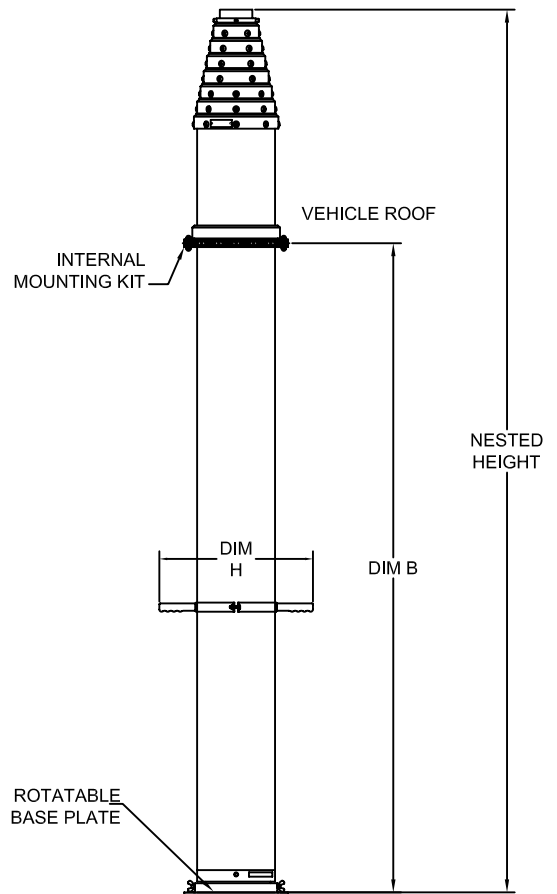
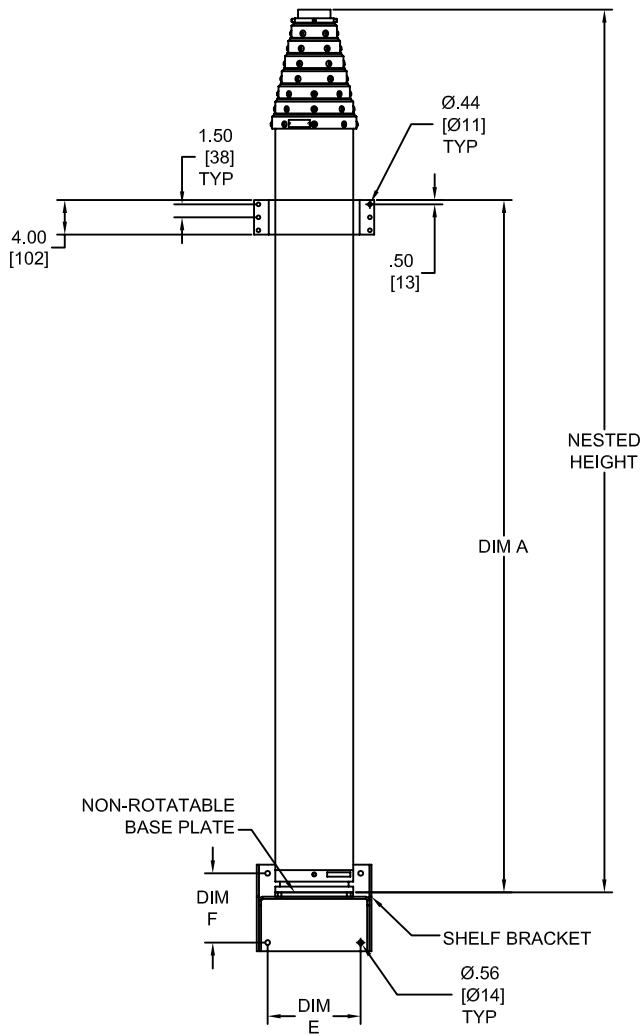
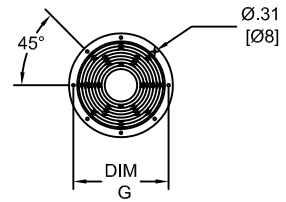
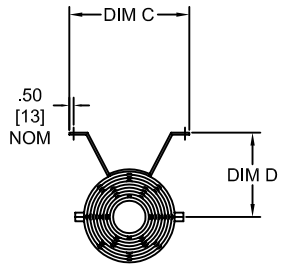




Heavy Duty Non-Locking Mast Installation Dimensions

Model	6-25	7-30	7-42	8.5-48	8.5-52	9.5-56	9-58
Payload capacity	150lb/68kg	150lb/68kg	150lb/68kg	200lb/90kg	100lb/45kg	200lb/90kg	90lb/40kg
Extended height	25ft/7.6m	29ft 1"/8.9m	41ft 2"/12.5m	48ft	52ft/15.8m	56ft 2"/17m	58ft/17.7m
Nested height	5ft 10"/1.8m	6ft 8"/2m	7ft 1"/2.1m	8ft 6"/2.6m	8ft 4"/2.5m	9ft 6"/2.9m	9ft 10"/2.7m
Approx. weight	110lb/50kg	125lb/57kg	235lb/107kg	275lb/125kg	266lb/121kg	296lb/135kg	290lb/132kg
Number of sections	6	6	9	8	9	8	9
Tube diameter	6.75-3"/171-76mm	6.75-3"/171-76mm	9-3"/229-76mm	9-3.75"/229-95mm	9-3"/229-76mm	9-3.75"/229-95mm	9-3"/229-76mm
Collar type	Non-Locking	Non-Locking	Non-Locking	Non-Locking	Non-Locking	Non-Locking	Non-Locking
Max. operating pressure	35 PSIG (2.4 bar)	35 PSIG (2.4 bar)	35 PSIG (2.4 bar)	35 PSIG (2.4 bar)	35 PSIG (2.4 bar)	35 PSIG (2.4 bar)	35 PSIG (2.4 bar)
Installation Dimensions "A" min.	49.69in/1261mm	61in/1549mm	55.13in/1400mm	73.75in/1873mm	69.75in/1772mm	85.75in/2178mm	77.75in/1975mm
Installation Dimensions "A" max.	57.88in/1470mm	68.75in/1746mm	68.88in/1750mm	87.25in/2216mm	83.25in/2115mm	99.25in/2521mm	91.25in/2318mm
Installation Dimensions "B" min.	35.5in/902mm	57.25in/1454mm	51.63in/1311mm	70in/1778mm	66in/1676mm	82in/2083mm	74in/1880mm
Installation Dimensions "B" max.	51.25in/1302mm	67.38in/1711mm	67.38in/1711mm	87.75in/2178mm	81.75in/2076mm	97.75in/2483mm	89.75in/2280mm
Installation Dimensions "C"	12.13in/308mm	12.13in/308mm	13.81in/351mm	13.81in/351mm	13.81in/351mm	13.81in/351mm	13.81in/351mm
Installation Dimensions "D"	8.25in/210mm	8.25in/210mm	9.75in/248mm	9.75in/248mm	9.75in/248mm	9.75in/248mm	9.75in/248mm
Installation Dimensions "E" Non-Rotating	6.5in/165mm	6.5in/165mm	8.44in/214mm	8.44in/214mm	8.44in/214mm	8.44in/214mm	8.44in/214mm
Installation Dimensions "E" Rotating	8.44in/214mm	8.44in/214mm	10.75in/273mm	10.75in/273mm	10.75in/273mm	10.75in/273mm	10.75in/273mm
Installation Dimensions "F" Non-Rotating	6in/152mm	6in/152mm	7.75in/197mm	7.75in/197mm	7.75in/197mm	7.75in/197mm	7.75in/197mm
Installation Dimensions "F" Rotating	7.75in/197mm	7.75in/197mm	8in/203mm	8in/203mm	8in/203mm	8in/203mm	8in/203mm
Installation Dimensions "G"	8.75in/222mm	8.75in/222mm	11in/279mm	11in/279mm	11in/279mm	11in/279mm	11in/279mm
Installation Dimensions "H"	15.73in/400mm	15.73in/400mm	17.74in/451mm	17.74in/451mm	17.74in/451mm	17.74in/451mm	17.74in/451mm



THIS DOCUMENT CONTAINS PROPRIETARY INFORMATION AND SHALL NOT BE USED OR REPRODUCED OR ITS CONTENTS DISCLOSED IN WHOLE OR IN PART WITHOUT THE PRIOR WRITTEN CONSENT OF THE WILL-BURT COMPANY.

WILL-BURT AN EMPLOYEE OWNED COMPANY
ORRVILLE, OHIO

NEXT ASSY:
DWG. No. **HEAVY DUTY MAST ASSY NR AND R**