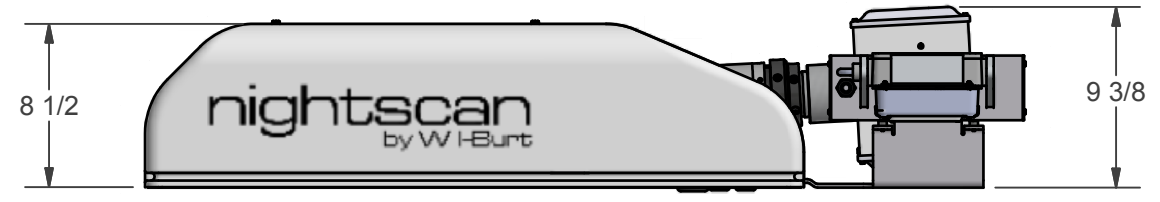
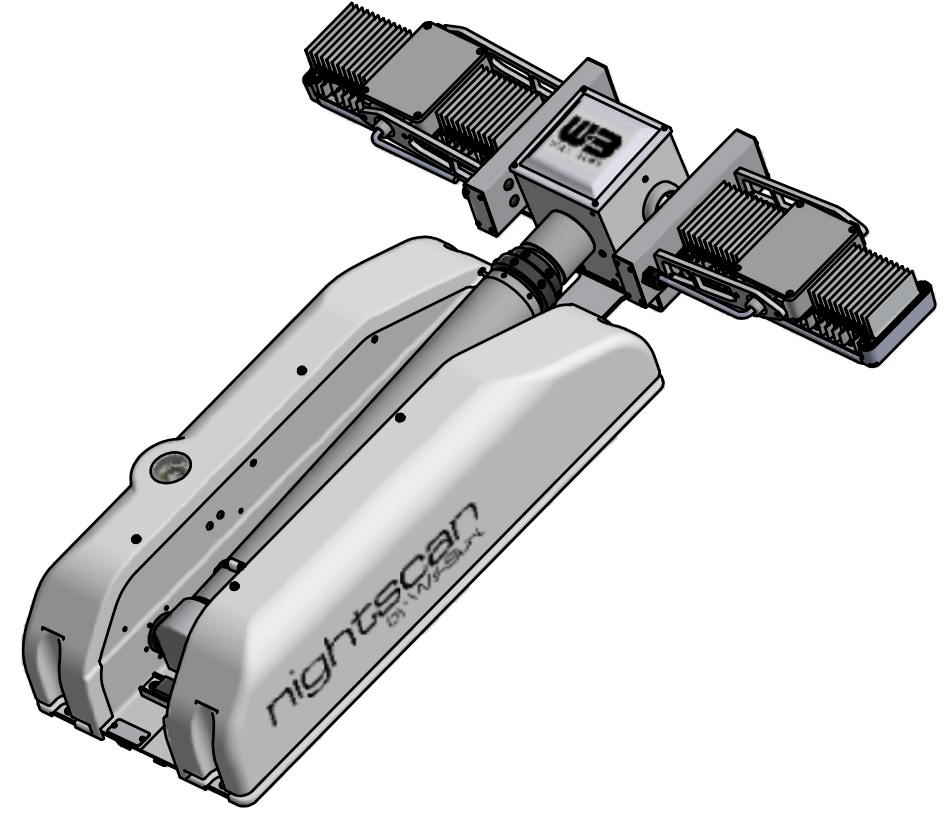
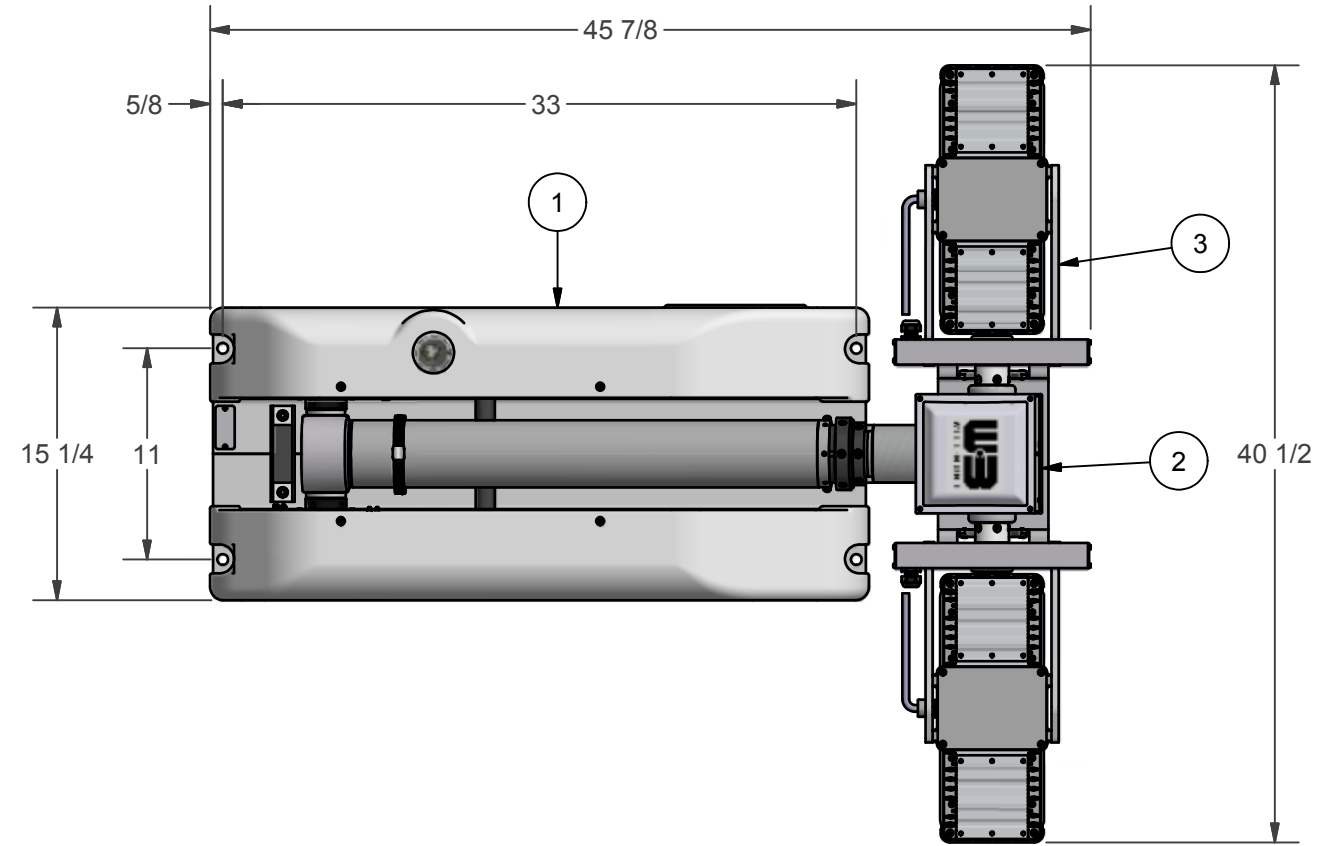


REVISION HISTORY				
ECN	REV	DESCRIPTION	DATE	BY/APPR
13227	00	INITIAL RELEASE	5/18/2016	RCC



BOM				
ITEM	QTY	PART NUMBER	DESCRIPTION	
1	1	4522003	NSC BASE ASSEMBLY 6.0 WHITE	
2	1	4548301	NSC RCP, LIGHTS ONLY	
3	1	4889006	SPECTRA-MAX 672 (2X3360W) 120VAC	
4	1	4558901	NSC LABEL KIT (NOT SHOWN)	
5	1	TP-4602001	MANUAL, NS 1.8/2.3, CE, CD VERSION (NOT SHOWN)	

- NOTES:
- 1 APPLY RTV #739 OR EQUAL TO ALL OPEN HOLES.
  - 2 SEE WIRING DIAGRAM WD-46276 FOR ALL UNITS.
  - 3 SET LIGHT BARS HOME POSITION PARALLEL TO BASE PLATE WHEN STOWED.

APPROX. WT: 100.61 lbmass

THIRD ANGLE PROJECTION



UNLESS OTHERWISE SPECIFIED DIMENSIONS ARE IN INCHES.

TOLERANCES ON DECIMALS    ANGLES  
0 = ± 0.030                      ± 1/2°  
00 = ± 0.010  
000 = ± 0.005

FRACTIONAL ± 1/64"

1. ALL INSIDE EDGES TO HAVE .005" TO .035" FILLETS.  
2. ALL OUTSIDE EDGES TO HAVE .005" TO .015" CHAMFER OR RADIUS.

125° ON ALL MACHINED SURFACES

**PROPRIETARY AND CONFIDENTIAL**

THE INFORMATION CONTAINED IN THIS DRAWING IS THE SOLE PROPERTY OF THE WILL-BURT COMPANY ANY REPRODUCTION IN PART OR WHOLE WITHOUT THE WRITTEN PERMISSION OF THE WILL-BURT COMPANY IS PROHIBITED.

APPROVALS	DATE
DRAWN RCC	5/18/2016
CHECKED	

**W-BURT** AN EMPLOYEE OWNED COMPANY  
ORRVILLE, OH

TITLE  
**NS 1.8 672 2X336W  
SPC-MAX 120VAC**

SIZE	DWG NO	REV
B	720681055	00

PN: 720681055      SHEET 1 OF 1