

REVISION HISTORY				
ECN	REV	DESCRIPTION	DATE	APPROVED
13217	00	INITIAL RELEASE	5/4/2016	RCC

BOM				
ITEM	QTY	PART NUMBER	DESCRIPTION	
1	1	4937501	VRT BASE ASM, 2.3 SIDE MNT	
2	1	4548324	RCP , ASSEMBLY, NSC, LOOK-UP LIGHT	
3	1	4597206	WHN LED 4 LIGHT 600W(4-150W 12VDC) FLD-SPD	
4	1	4937301	SADDLE, NS COMPLETE	
5	1	4558910	NSC LABEL KIT	
6	1	4938601	CARTON W/FOAM FOR VRT7.5 SIDE MOUNT	
7	1	4938602	PALLET/ VRT7.5 SIDE MOUNT	
8	1	TP-5319701	OPERATOR'S MANUAL	
9	1	WD-87050	WIRING DIAGRAM (NOT SHOWN)	
15	1	EXP-EXP4EXP		

UNLESS OTHERWISE SPECIFIED DIMENSIONS ARE IN INCHES.
 TOLERANCES ON DECIMALS ANGLES
 0 = ± 0.030 ± 1/2°
 .00 = ± 0.010
 .000 = ± 0.005
 FRACTIONAL ± 1/64"
 1. ALL INSIDE EDGES TO HAVE .005" TO .035" FILLETS.
 2. ALL OUTSIDE EDGES TO HAVE .005" TO .015" CHAMFER OR RADIUS.
 125° ON ALL MACHINED SURFACES

APPROX. WT: N/A

THIRD ANGLE PROJECTION

PROPRIETARY AND CONFIDENTIAL
 THE INFORMATION CONTAINED IN THIS DRAWING IS THE SOLE PROPERTY OF THE WILL-BURT COMPANY ANY REPRODUCTION IN PART OR WHOLE WITHOUT THE WRITTEN PERMISSION OF THE WILL-BURT COMPANY IS PROHIBITED.

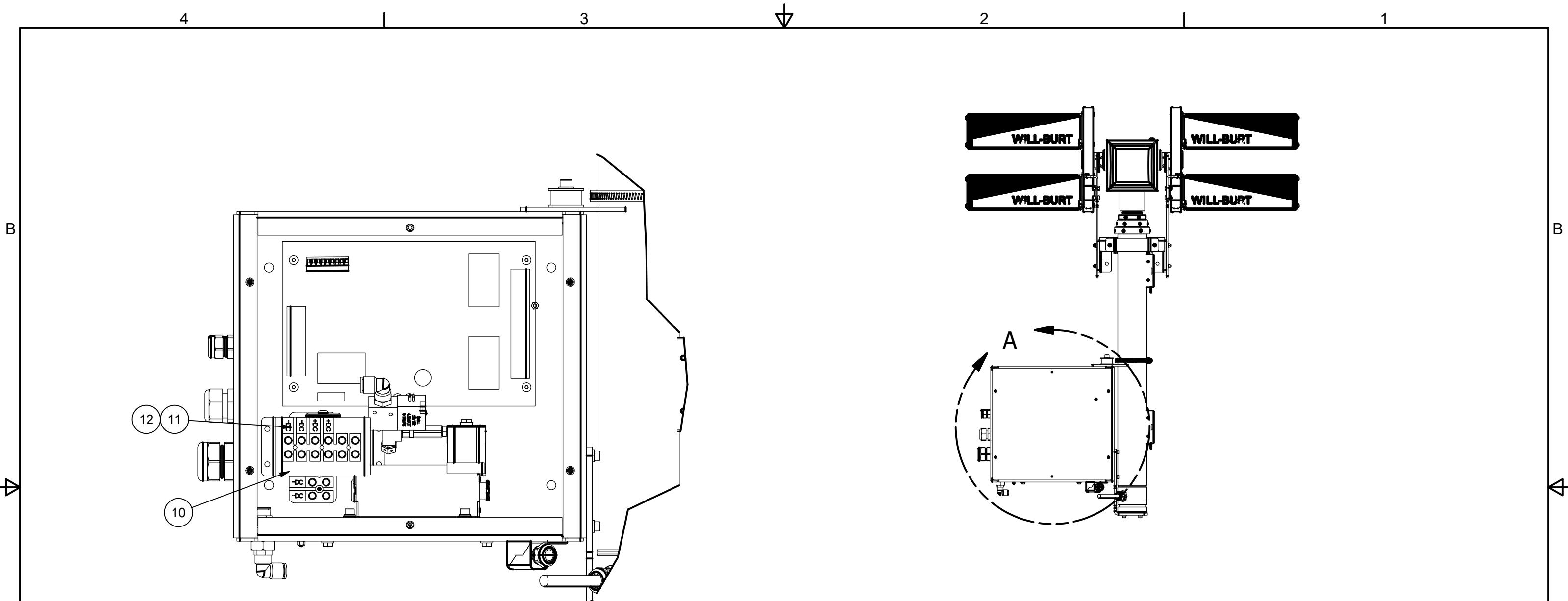
APPROVALS	DATE
DRAWN RCC	7/1/2014
CHECKED	

WILL-BURT AN EMPLOYEE OWNED COMPANY
 ORRVILLE, OH

TITLE
VRT 7.5 600W 4x150W WHL SPT/FLD 12VDC SHN

SIZE	DWG NO	REV
B	720087065	00

PN: 720087065 SHEET 1 OF 2



DETAIL A

NOTES:

- 1 INSTALL 5365601, ROUTE WIRES PER WD-87050.
- 2 RETURN 4965102 BACK TO INVENTORY.
- 3 APPLY LOCTITE #242 TO THREADS.
- 4 NOTE COVER ORIENTATION.
- 5 SEE WIRING DIAGRAM WD-87050.

UNLESS OTHERWISE SPECIFIED DIMENSIONS ARE IN INCHES.
 TOLERANCES ON DECIMALS ANGLES
 0 = ± 0.030 ± 1/2°
 00 = ± 0.010
 000 = ± 0.005
 FRACTIONAL ± 1/64"
 1. ALL INSIDE EDGES TO HAVE .005" TO .035" FILLETS.
 2. ALL OUTSIDE EDGES TO HAVE .005" TO .015" CHAMFER OR RADIUS.
 125√ ON ALL MACHINED SURFACES

PROPRIETARY AND CONFIDENTIAL
 THE INFORMATION CONTAINED IN THIS DRAWING IS THE SOLE PROPERTY OF THE WILL-BURT COMPANY ANY REPRODUCTION IN PART OR WHOLE WITHOUT THE WRITTEN PERMISSION OF THE WILL-BURT COMPANY IS PROHIBITED.

W3 AN EMPLOYEE OWNED COMPANY
 WILL-BURT ORRVILLE, OH

TITLE
**VRT 7.5 600W 4x150W WHL
 SPT/FLD 12VDC SHN**

APPROVALS	DATE	SIZE	DWG NO	REV
DRAWN RCC	7/1/2014	B	720087065	00
CHECKED		PN:	720087065	SHEET 2 OF 2

BOM			
ITEM	QTY	PART NUMBER	DESCRIPTION
10	1	5365601	TERMINAL PANEL, 600W MAX, 12VDC
11	2	2356	NUT NYLOCK #10-32 HX 18-8 SSTL
12	2	2530	SCR MCH #10-32X0.500 PN HD PHL SSTL MIL
15	1	EXP-EXP	

APPROX. WT:N/A
 THIRD ANGLE PROJECTION