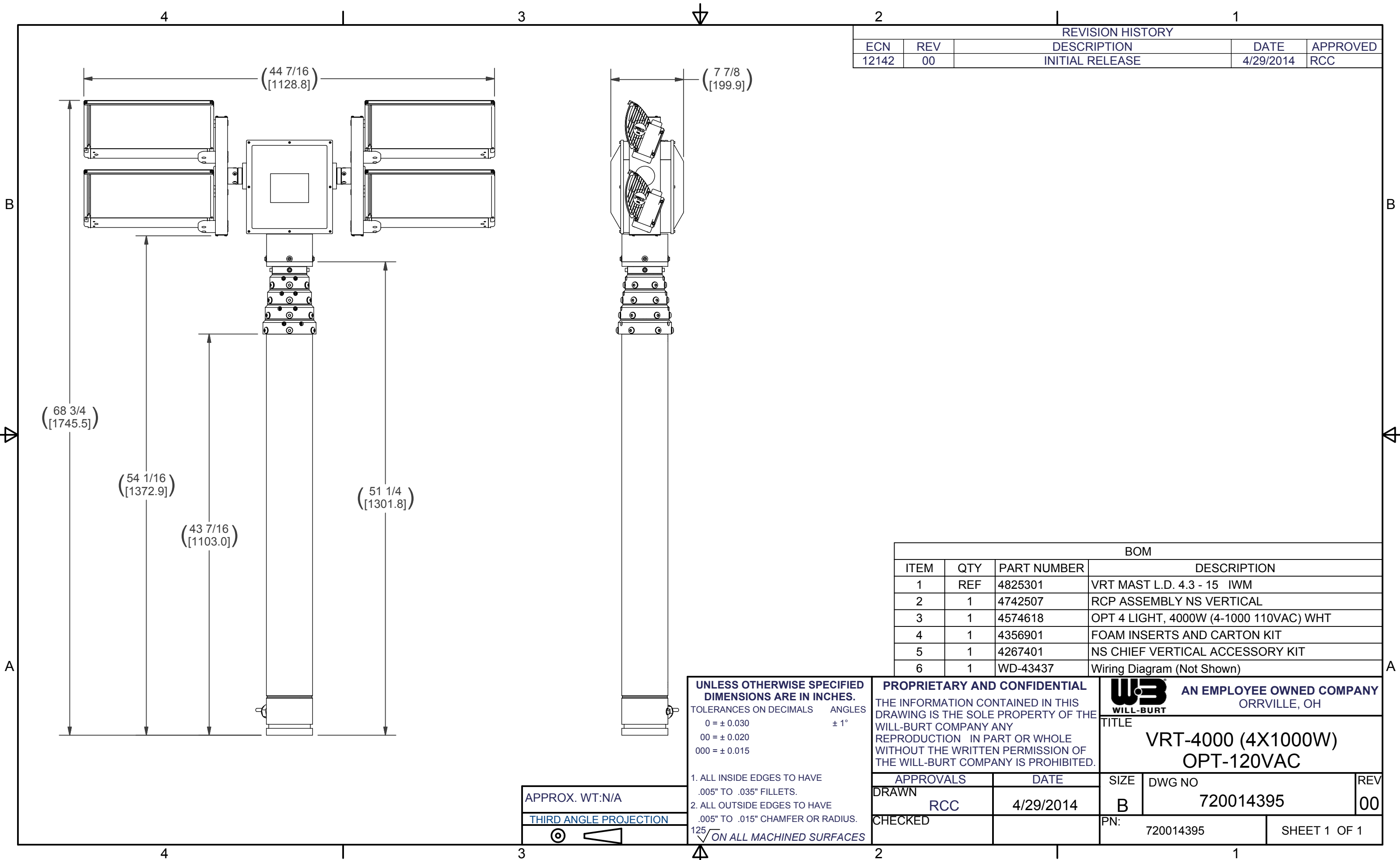


REVISION HISTORY				
ECN	REV	DESCRIPTION	DATE	APPROVED
12142	00	INITIAL RELEASE	4/29/2014	RCC



BOM			
ITEM	QTY	PART NUMBER	DESCRIPTION
1	REF	4825301	VRT MAST L.D. 4.3 - 15 IWM
2	1	4742507	RCP ASSEMBLY NS VERTICAL
3	1	4574618	OPT 4 LIGHT, 4000W (4-1000 110VAC) WHT
4	1	4356901	FOAM INSERTS AND CARTON KIT
5	1	4267401	NS CHIEF VERTICAL ACCESSORY KIT
6	1	WD-43437	Wiring Diagram (Not Shown)

**UNLESS OTHERWISE SPECIFIED DIMENSIONS ARE IN INCHES.**  
TOLERANCES ON DECIMALS ANGLES  
0 = ± 0.030 ± 1°  
00 = ± 0.020  
000 = ± 0.015

1. ALL INSIDE EDGES TO HAVE .005" TO .035" FILLETS.  
2. ALL OUTSIDE EDGES TO HAVE .005" TO .015" CHAMFER OR RADIUS.  
125  $\sqrt{\quad}$  ON ALL MACHINED SURFACES

APPROX. WT:N/A  
**THIRD ANGLE PROJECTION**

**PROPRIETARY AND CONFIDENTIAL**  
THE INFORMATION CONTAINED IN THIS DRAWING IS THE SOLE PROPERTY OF THE WILL-BURT COMPANY ANY REPRODUCTION IN PART OR WHOLE WITHOUT THE WRITTEN PERMISSION OF THE WILL-BURT COMPANY IS PROHIBITED.

APPROVALS	DATE
DRAWN RCC	4/29/2014
CHECKED	

**WILL-BURT** AN EMPLOYEE OWNED COMPANY  
ORRVILLE, OH

TITLE  
**VRT-4000 (4X1000W)  
OPT-120VAC**

SIZE B	DWG NO 720014395	REV 00
PN: 720014395	SHEET 1 OF 1	