

| REVISIONS | | | | |
|-----------|-----|--|----------|----------|
| ECN | REV | DESCRIPTION | DATE | BY/APPVL |
| 10733 | K | DELETE PAGE 2 SHOWING RCP LIGHT POWER TERMINAL BLOCK. | 11-3-11 | DJB/JMK |
| 11067 | L | ADD CHASSIS GROUND CONNECTION TO LIGHT POWER. | 05-30-12 | DJB/JMK |
| 11224 | M | ADD COLOR TO WIRES [11]-[14], UPDATE RCP WIRING DETAILS. | 08-28-12 | DJB/JMK |
| 11490 | N | CORRECT (kill) AND (init) REFERENCES, UPDATE TABLE 1 | 02-20-13 | DJB/JA |

NOTES:
1. INSTALLER CONNECTIONS.

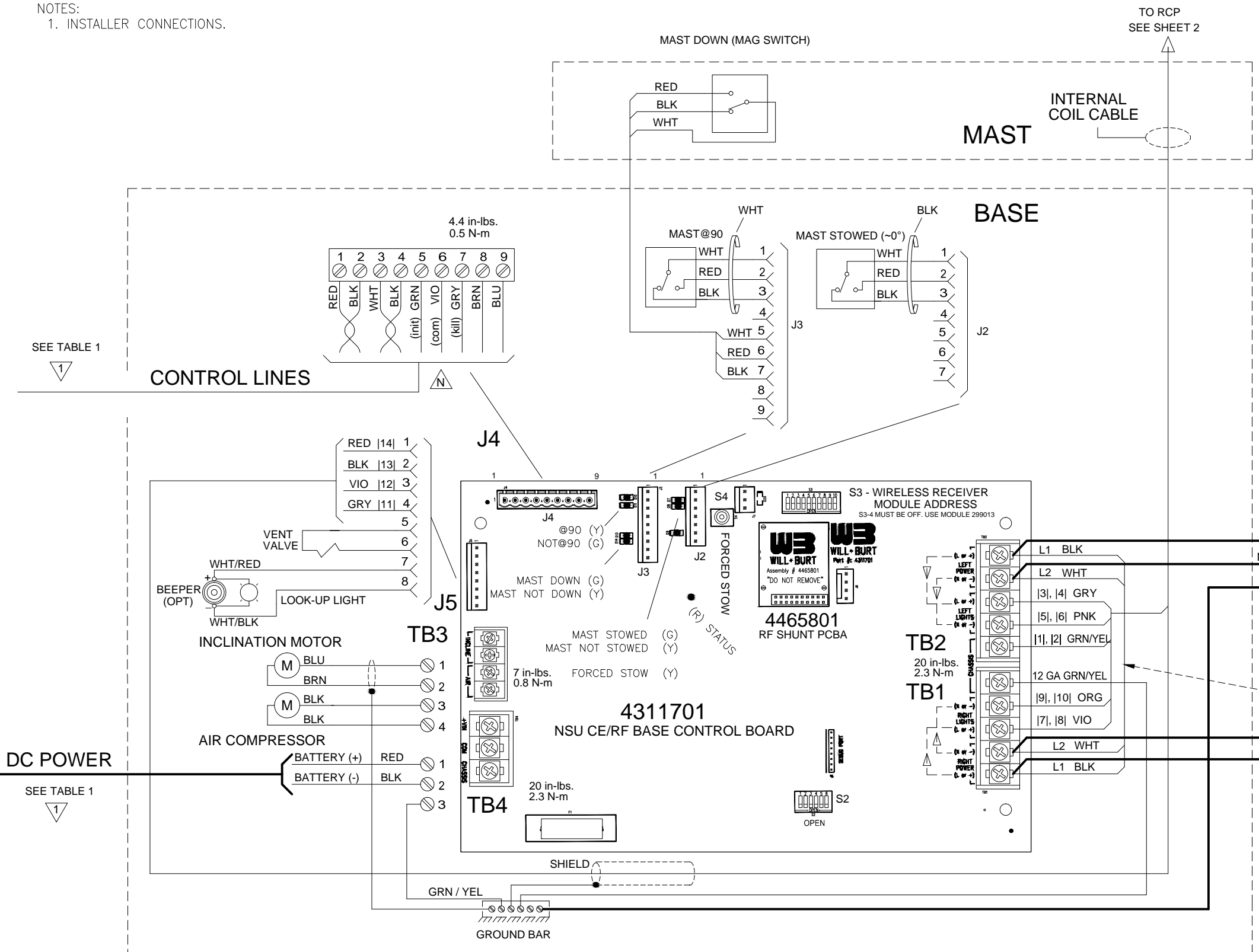


TABLE 1 - CONTROLLER WIRING

| APPLICATION | TYPE | DRAWING |
|--------------------------------|----------|----------|
| SINGLE HARD-WIRED PANEL MOUNT | NFPA | WD-72201 |
| SINGLE HARD-WIRED J-BOX | NFPA | WD-72202 |
| | STANDARD | WD-72203 |
| HARD-WIRED J-BOX & PANEL MOUNT | NFPA | WD-72204 |
| | STANDARD | WD-72206 |
| TWO HARD-WIRED J-BOXES | NFPA | WD-72205 |
| | STANDARD | WD-72206 |
| HHRC WITH E-STOP | BOTH | WD-72212 |
| RF HHRC & E-STOP | BOTH | WD-72007 |

BASE DIP SWITCH S2

| POS | OPEN | CLOSED |
|-----|---------------------------|-------------------------|
| 1 | J4 8,9 CLOSED WHEN NESTED | J4 8,9 OPEN WHEN NESTED |
| 2 | NFPA MODE | STANDARD |
| 3 | RCP | NO RCP |
| 4 | ROOF MOUNT | VERTICAL |
| 5 | UNUSED | UNUSED |
| 6 | NORMAL | DO NOT USE |

| AWG | in-lbs. |
|--------------|---------|
| 14-10 CU | 20 |
| 12-10 AL | 20 |
| (2)14, 12 CU | 25 |
| (2)12, 10 AL | 25 |
| 8 | 25 |
| 6 - 4 | 35 |

| | | | |
|-----------------------------------|--|--|--|
| MATERIAL NSC SYSTEM WIRING.DWG | UNLESS OTHERWISE SPECIFIED DIMENSIONS ARE IN INCHES | THIS DOCUMENT CONTAINS PROPRIETARY INFORMATION AND SHALL NOT BE USED OR REPRODUCED OR ITS CONTENTS DISCLOSED IN WHOLE OR IN PART, WITHOUT THE PRIOR WRITTEN CONSENT OF THE WILL-BURT COMPANY. | AN EMPLOYEE OWNED COMPANY ORRVILLE, OHIO |
| | TOLERANCES ON: DECIMALS ANGLES 0 = ± ± 1/2" 00 = ± 000 = ± | | |
| FINISH | FRACTIONS ± | FOR LOGISTICAL SUPPORT ONLY | NEXT ASSY DESC. NS CE ROOF MOUNT WITH 4311701-CE/RF CONTROL BASE WIRING |
| | BREAK ALL SHARP CORNERS 1/25" ON ALL MACHINED SURFACES | SIGNATURE DATE | |
| | | DR. BY DJB - CK. BY JN - APP. BY | SIZE DWG. No. 46066 SCALE NTS SHEET 1 OF 2 |

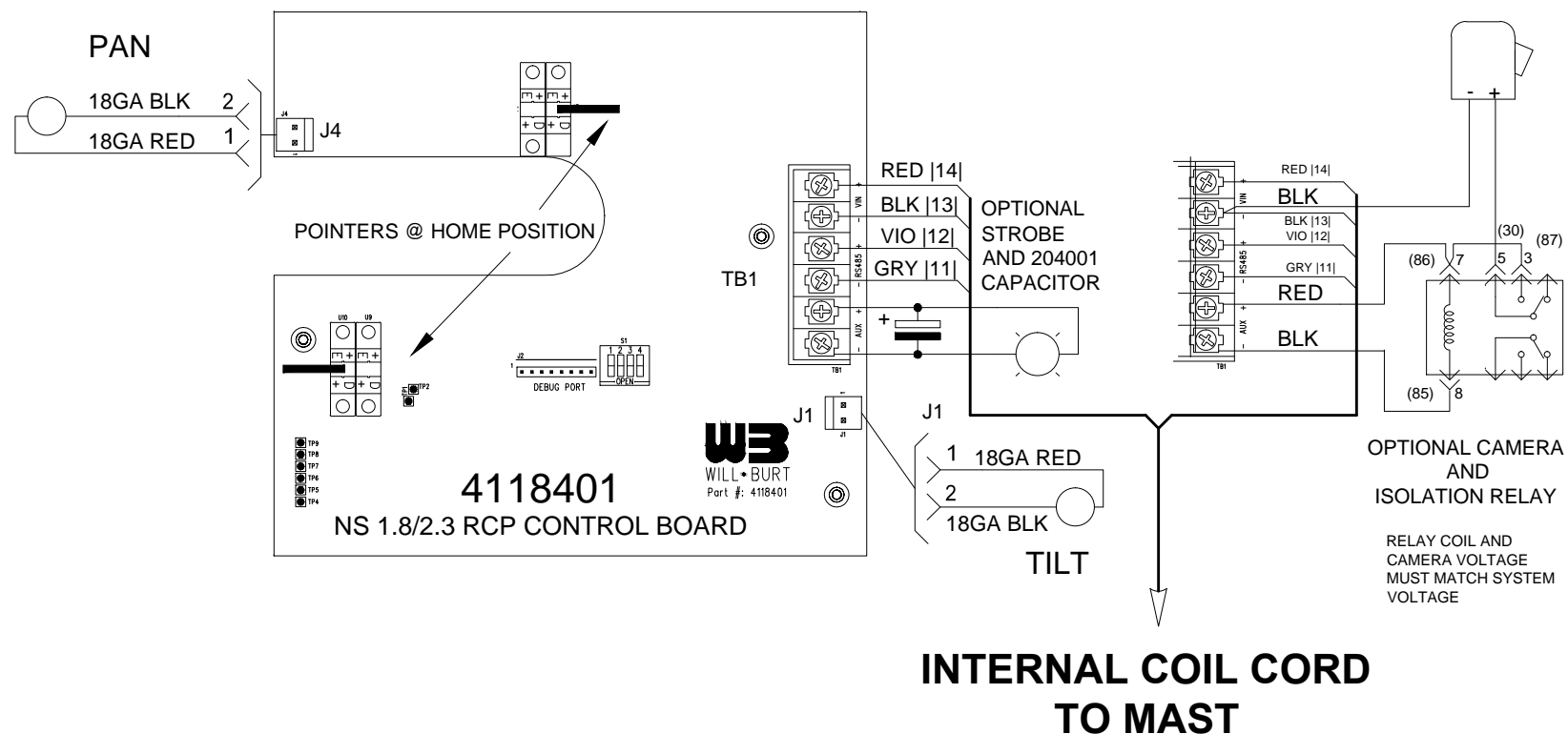
NOTES:
 2. AC LIGHTS MAY HAVE 2 BLACK WIRES, 2 WHITE WIRES OR 1 BLACK AND 1 WHITE WIRE.

RCP DIP SWITCH S1

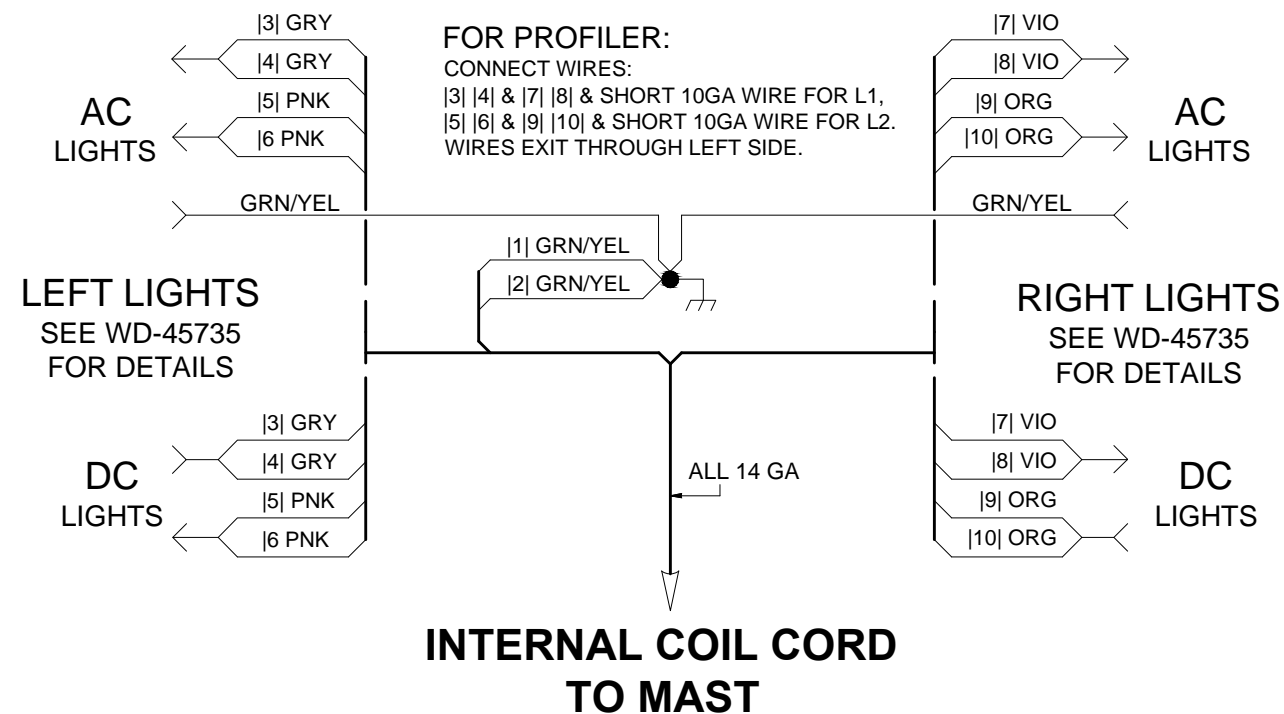
| POS | OPEN | CLOSED |
|-----|---------------------|----------------------|
| 1 | STOP ON FAULT | STOW ON FAULT |
| 2 | RCP | POSITIONER |
| 3 | STOW WHILE LOWERING | STOW BEFORE LOWERING |
| 4 | UNUSED | UNUSED |

| REVISIONS | | | | |
|-----------|-----|--|----------|----------|
| ECN | REV | DESCRIPTION | DATE | BY/APPVL |
| 10733 | K | DELETE PAGE 2 SHOWING RCP LIGHT POWER TERMINAL BLOCK. | 11-3-11 | DJB/JMK |
| 11067 | L | ADD CHASSIS GROUND CONNECTION TO LIGHT POWER. | 05-30-12 | DJB/JMK |
| 11224 | M | ADD COLOR TO WIRES [11]-[14], UPDATE RCP WIRING DETAILS. | 08-28-12 | DJB/JMK |
| 11490 | N | CORRECT (kill) AND (init) REFERENCES, UPDATE TABLE 1 | 02-20-13 | DJB/JA |

"| X |" DENOTES WIRE LABEL
 COLOR CODE WIRES [5] [6] AND
 [9] [10] WHITE IN 110 VAC MODELS



CONTROL WIRING



LIGHT POWER WIRING

| | | | |
|-----------------------------------|--|--|---|
| MATERIAL NSC SYSTEM WIRING.DWG | UNLESS OTHERWISE SPECIFIED DIMENSIONS ARE IN INCHES TOLERANCES ON: DECIMALS ANGLES 0 = ± ± 1/2" 00 = ± 000 = ± FRACTIONS ± BREAK ALL SHARP CORNERS 1/25" ON ALL MACHINED SURFACES | THIS DOCUMENT CONTAINS PROPRIETARY INFORMATION AND SHALL NOT BE USED OR REPRODUCED OR ITS CONTENTS DISCLOSED IN WHOLE OR IN PART, WITHOUT THE PRIOR WRITTEN CONSENT OF THE WILL-BURT COMPANY. FOR LOGISTICAL SUPPORT ONLY SIGNATURE DATE DR.BY DJB - CK.BY JN - APP.BY | AN EMPLOYEE OWNED COMPANY ORRVILLE, OHIO NEXT ASSY DESC. NS CE ROOF MOUNT WITH 4311701-CE/RF CONTROL RCP WIRING SIZE DWG. No. 46066 SCALE NTS SHEET 2 OF 2 |
|-----------------------------------|--|--|---|