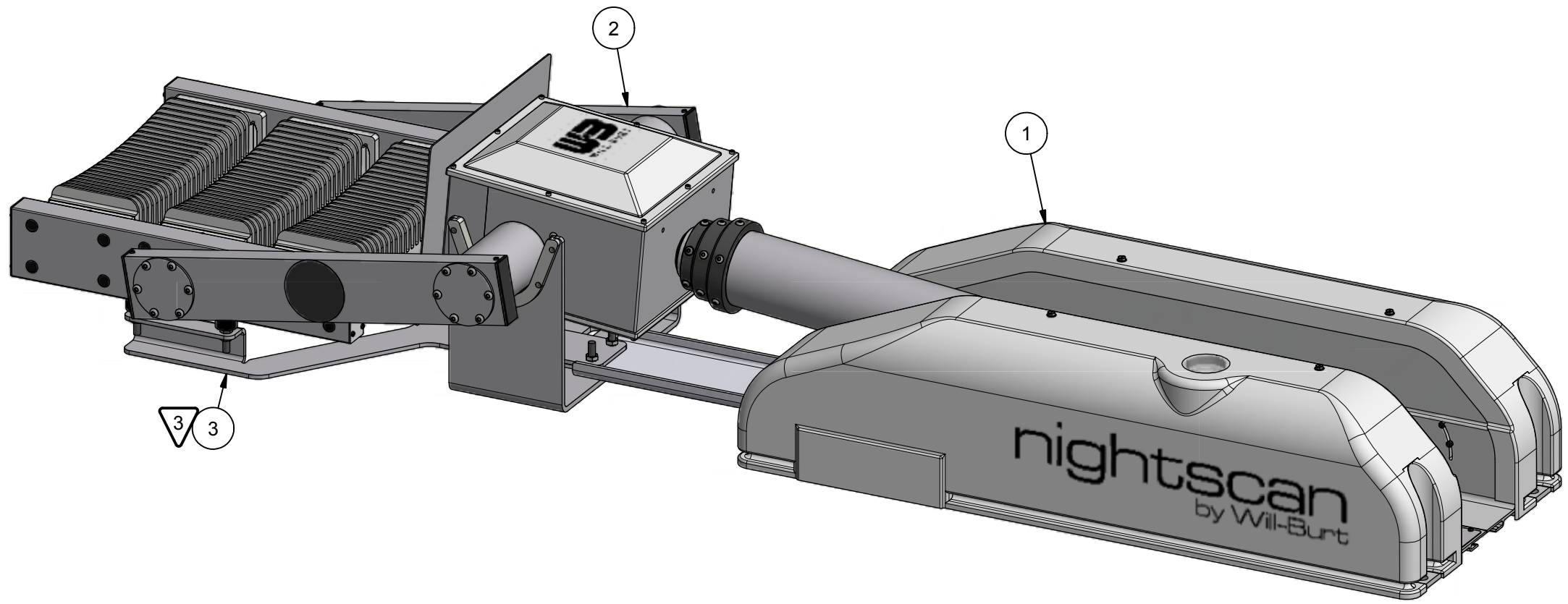


REVISION HISTORY				
ECN	REV	DESCRIPTION	DATE	APPROVED
13991	00	INITIAL RELEASE	5/07/2018	RCC



BOM			
ITEM	QTY	PART NUMBER	DESCRIPTION
1	1	5416301	NSC BASE ASM, 7.5FT D/T RCP PROFILER
2	1	5337801	PROFILER HDT 3LIGHTS 375W 12-60VDC
3	1	5494701	PROFILER SUPPORT NSP/3LT 1.8" WHL
4	1	4558901	NSC LABEL KIT (NOT SHOWN)
5	1	WD-46276	WIRING DIAGRAM (NOT SHOWN)
6	1	TP-4602001	MANUAL, NS 1.8/2.3, CE, CD VERSION (NOT SHOWN)

- NOTES:
- 1 APPLY RTV #739 OR EQUAL TO ALL OPEN HOLES.
 - 2 SEE WIRING DIAGRAM WD-46276 FOR ALL UNITS.
 - 3 SET LIGHT BARS HOME POSITION PARALLEL TO BASE PLATE WHEN STOWED,

UNLESS OTHERWISE SPECIFIED DIMENSIONS ARE IN INCHES.
TOLERANCES ON DECIMALS ANGLES
0 = ± 0.030 ± 1°
00 = ± 0.020
000 = ± 0.015

1. ALL INSIDE EDGES TO HAVE .005" TO .035" FILLETS.
2. ALL OUTSIDE EDGES TO HAVE .005" TO .015" CHAMFER OR RADIUS.
125 $\sqrt{\quad}$ ON ALL MACHINED SURFACES

APPROX. WT:128.6 lbmass

THIRD ANGLE PROJECTION

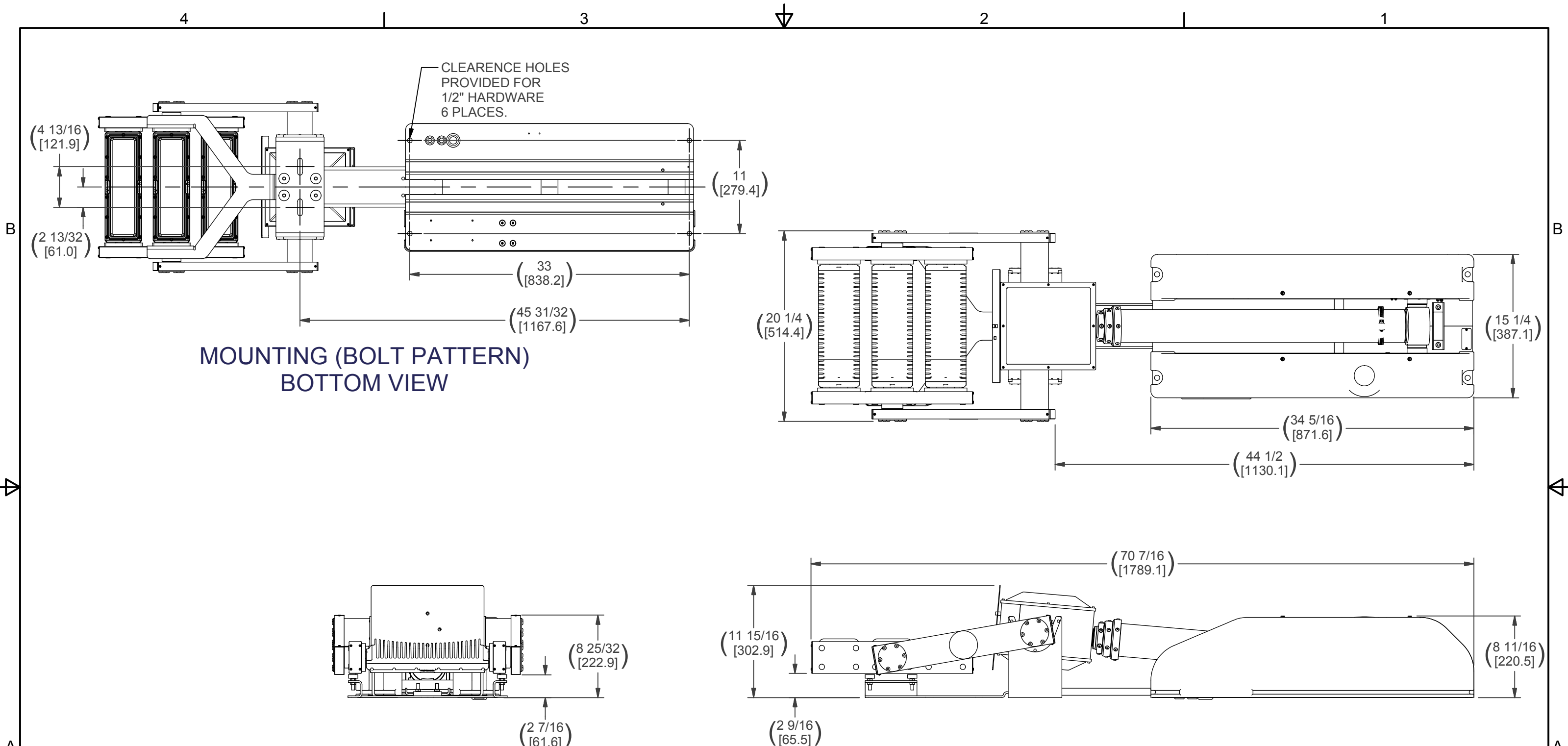


PROPRIETARY AND CONFIDENTIAL
THE INFORMATION CONTAINED IN THIS DRAWING IS THE SOLE PROPERTY OF THE WILL-BURT COMPANY ANY REPRODUCTION IN PART OR WHOLE WITHOUT THE WRITTEN PERMISSION OF THE WILL-BURT COMPANY IS PROHIBITED.



TITLE
NSC 2.3 PRFLR 375 3X125W NSXL 12-60VDC

APPROVALS	DATE	SIZE	DWG NO	REV
DRAWN RCC	5/7/2018	B	720740014	00
CHECKED		PN:	720740014	SHEET 1 OF 2



MOUNTING (BOLT PATTERN)
BOTTOM VIEW

APPROX. WT:128.6 lbmass

THIRD ANGLE PROJECTION



**UNLESS OTHERWISE SPECIFIED
DIMENSIONS ARE IN INCHES.**
TOLERANCES ON DECIMALS ANGLES
0 = ± 0.030 ± 1°
00 = ± 0.020
000 = ± 0.015

1. ALL INSIDE EDGES TO HAVE
.005" TO .035" FILLETS.
2. ALL OUTSIDE EDGES TO HAVE
.005" TO .015" CHAMFER OR RADIUS.
125√ ON ALL MACHINED SURFACES

PROPRIETARY AND CONFIDENTIAL
THE INFORMATION CONTAINED IN THIS
DRAWING IS THE SOLE PROPERTY OF THE
WILL-BURT COMPANY ANY
REPRODUCTION IN PART OR WHOLE
WITHOUT THE WRITTEN PERMISSION OF
THE WILL-BURT COMPANY IS PROHIBITED.

WB AN EMPLOYEE OWNED COMPANY
WILL-BURT ORRVILLE, OH

TITLE
**NSC 2.3 PRFLR 375 3X125W
NSXL 12-60VDC**

APPROVALS	DATE
DRAWN RCC	5/7/2018
CHECKED	

SIZE	DWG NO	REV
B	720740014	00
PN: 720740014		SHEET 2 OF 2