



FIELD AND PORTABLE ELEVATION SOLUTIONS



Watch
Product Video



Visit
Corporate Website



Download
Product Brochure



Watch
Corporate Video

COMMUNICATIONS



QUICK ERECTING ANTENNA MAST (QEAM)

Designed for manual or motorized operation, Will-Burt's QEAM (Quick Erecting Antenna Mast) Family of lightweight composite or aluminum masts elevate light payloads for ground-mounted or vehicle, trailer and shelter deployment.

Will-Burt's Screw Drive QEAM is a lightweight, high strength telescopic mast that offers a rigid, stable platform for elevating critical payloads.

SCREW DRIVE ESSENTIAL FEATURES

- Easy manual crank up
 - Reliable deployment without power
- Automatic locking collars
 - Locks at any desired height
 - Patented latch mechanism
- Standard ground mounting kits with guylines and transport bag included
- Optional vehicle and shelter mounting kits available



The Strap Driven QEAM uses an internal strap wound between tube sections for mast elevation. Designed for manual operation, The Strap Drive QEAM has heavier payload weight-lifting capability, and is available in 21, 25, 30 and 34 meter heights.

STRAP DRIVE ESSENTIAL FEATURES

- Maintains azimuth - minimal twist deflection
 - Reliable full-length external keyways
- Positions payload at any height
 - Automatic locking collars - patented latch system
- Manual mechanical drive
 - Reliable deployment without power
- Automatic locking collars
 - Locks at any desired height with patented latch mechanism
- Mechanical stops
- Prevents over-extension
- Full length keys on sections
 - Prevents twist
- Maintenance free
 - Polymer drive nuts require no greasing
- Built in cable management
 - Cable loops added at collars
- Corrosion resistant
 - All parts are anodized aluminum & stainless steel
 - Drive crank is a completely sealed mechanism



SPECIFICATIONS

QEAM	TM 10 (Aluminum)	TM 21	TM 25	TM 30	TM 34
Nested Height (ft. / m)	8 / 2.4	14.6 / 4.45	14.8 / 4.5	19.3 / 5.9	19 / 5.8
Extended Height (ft. / m)	32.8 / 10	68.9 / 21	82 / 25	98.4 / 30	112 / 34
Guying	2 level / 3 way	4 level / 4 way	5 level / 4 way	5 level / 4 way	5 level / 4 way
Number of Sections	5	6	7	6	7
Weight (Mast Only) (lb / kg)	42 / 19	197 / 90	220 / 100	250 / 114	265 / 121
Weight (Accessory Kit) (lb / kg)	52 / 24	245 / 111	275 / 125	275 / 125	275 / 125
Payload Capacity (lb / kg)	15 / 7	180 / 80	150 / 68	150 / 68	110 / 50
Maximum Sail Area (ft. ² / m ²)	6 / 0.6 CD=1.5	6 / 0.6 CD=1.5	6 / 0.6 CD=1.5	6 / 0.6 CD=1.5	6 / 0.6 CD=1.5
Ice load (in. / mm)	0.5 / 12	0.5 / 12	0.5 / 12	0.5 / 12	0.5 / 12
Maximum Erection Wind* (mph / km/h)	25 / 40	25 / 40	25 / 40	25 / 40	25 / 40
Operational Wind (mph / km/h)	60 / 97	60 / 97	60 / 97	60 / 97	60 / 97
Survival Wind (mph / km/h)	80 / 128	80 / 128	80 / 128	80 / 128	80 / 128
Surface Mounting	±15° slope	±15° slope	±15° slope	±15° slope	±15° slope
Deployment Time	2 persons, 7.5 min	3 persons, 25 min	3 persons, 30 min	3 persons, 30 min	3 persons, 30 min
Drive System	Screw Drive	Strap Drive	Strap Drive	Strap Drive	
Finish	CARC Green				MIL-A-8625 Type II, CL 2 Black

Specifications are for reference only and subject to change. Please contact Will-Burt Engineering for current and exact specifications. *Must be guyed for wind speeds over 25 mph / 40km/h

HURRY-UP PORTABLE PUSH UP TELESCOPING MAST

The Hurry-Up mast is ideal for fast deployment of lightweight antennas and equipment. This mast is available in four extended heights from 7 ft. / 3.5 m to 30 ft. / 9 m in one minute or less and easily manages payloads up to 20 lb / 9 kg. The Hurry-Up mast features quick lock/release collars to extend the mast manually by pushing up the sections and fixing them into position. The Hurry-Up mast is well suited for field testing. Optional Drive-On plate allows the mast to be secured by simply driving a vehicle onto the plate.

ESSENTIAL FEATURES

- Rigid Azimuth Locking Collars
 - Quick direction adjustments
- Black anodized finish
 - Corrosion resistant
- Simple design and operation
 - Manual push-up deployment, retraction, and locking of mast

ACCESSORIES

(mounting option required):

- Drive-on plate mounting
 - No guylines required
- Removable payload extension stub
 - Easy payload mounting
- External support brackets
 - Permanent vehicle mounting
- Hitch Mount
 - 2" Hitch - Removable



SPECIFICATIONS

Models	710103010	903614	719901610	719900790
Payload Capacity	20 lb / 9.1 kg	20 lb / 9.1 kg	20 lb / 9.1 kg	20 lb / 9.1 kg
Extended Height	30' / 9 m	24.3' / 7.6 m	16.4' / 5.3 m	7' / 2.1 m
Nested Height	6' 9" / 2 m	5' 9" / 1.8 m	5' 4" / 1.6 m	3' 5" / .9 m
Approximate Weight	36 lb / 16 kg	29 lb / 13 kg	19 lb / 9 kg	15 lb / 7 kg
Number of Sections	6	6	4	3
Tube Diameter	3.5-1.5" / 89-38 mm	3.5-1.5" / 89-38 mm	3.5-2.25" / 89-57 mm	3.5-2.625" / 89-67 mm
Collar Type	Friction Locking	Friction Locking	Friction Locking	Friction Locking
Finish	Black Anodize, MIL-A-8625, Type II, Class 2	Black Anodize, MIL-A-8625, Type II, Class 2	Black Anodize, MIL-A-8625, Type II, Class 2	Black Anodize, MIL-A-8625, Type II, Class 2

COMMUNICATIONS

CLARK MASTS QT SERIES

The QT Range of lightweight telescopic pneumatic masts are designed to be portable and erected quickly where they are required. Available in a wide range of heights from 3m to 15m and in a range of sizes to suit varying headloads. It is a highly versatile system capable of being field mounted using a folding tripod stand or field guy set. Equally at home when mounted to a vehicle or shelter, the QT Range is designed to be versatile. Made from high strength 16 swg aluminium tube, to save weight, the QT Range is non keyed and each section is fitted with a locking collar. Headloads are quickly attached using the quick clamp 24mm socket.

ESSENTIAL FEATURES

- Lightweight and portable
- Field, vehicle or shelter mounted
- Integral handpump
- Locking collars
- 24mm quick clamp top socket



SPECIFICATIONS

Model Number	CQTX4-6/HP	CQTX6-6/HP	CQTX8-6/HP	CQTX10-6/HP	CQTX12-6/HP
Extended Height (ft. / m)	13.1 / 4	20 / 6.10	26.1 / 7.95	33.3 / 10.15	40 / 12.20
Nested Height (ft. / m)	3.5 / 1.05	4.9 / 1.50	5.9 / 1.80	7.2 / 2.20	8.7 / 2.65
Payload Capacity (lb. / kg)	44 / 20	44 / 20	44 / 20	40 / 18	33 / 15
Number of Sections	6	6	6	6	6
Tube Diameter (in. / mm)	3.5 / 88.9	3.5 / 88.9	3.5 / 88.9	3.5 / 88.9	3.5 / 88.9
Collar Type	Non-Rotatable	Non-Rotatable	Non-Rotatable	Non-Rotatable	Non-Rotatable
Time to Extend (seconds)	15	30	40	50	60
Time to Retract (seconds)	10	20	30	40	45
Finish	Natural Anodized	Natural Anodized	Natural Anodized	Natural Anodized	Natural Anodized

CLARK MASTS QT SERIES GROUND TRIPOD

This very stable stand folds vertically and is easy to carry and store. All Mk VI Tripods can either be stored vertically or horizontally. Suitable for non-rotatable masts up to 15 meters.



Horizontal storage position



Vertical storage position

Example 1: Tripod legs manually adjustable above ground level, recommended position for Mk VI Tripod with leg lengths 750, 1000, 1250 mm.



Example 2: Tripod legs manually adjustable at ground level, recommended position for Mk VI Tripod with leg lengths 1500, 1750, and 2000 mm.



GROUND / VEHICLE / SHELTER TRIPOD WITH TRIPOD MOUNTING BRACKET

The Tripod Mounting Bracket can be fixed onto a wall, vehicle, or shelter. A Ground / Vehicle / Shelter Tripod is foreseen with a Locking Block which enables the user to attach this tripod to the Tripod Mounting Bracket for compact vertically storage, **with or without the mast**. Suitable for non-rotatable QT masts up to 15 meters.

USE OF THE TRIPOD MOUNTING BRACKET



Tripod Mounting Bracket

Tripod Mounting Bracket with Tripod Stand and Mast Mounted

Tripod Mounting Bracket with Tripod Stand Mounted

MK VI TRIPOD SPECIFICATIONS (Non-Rotatable Only)

Description	Weight (lb. / kg)	Max Mast Height (ft. / m)
Tripod Mk VI - 4m mast	25.2 / 11.4	13.1 / 4
Tripod Mk VI - 6m mast	28.0 / 12.7	19.7 / 6
Tripod Mk VI - 8m mast	30.9 / 14.0	26.3 / 8
Tripod Mk VI - 10m mast	34.0 / 15.4	32.8 / 10
Tripod Mk VI - 12m mast	36.9 / 16.7	39.4 / 12

COMMUNICATIONS

ANTENNA MAST[®]

The AntennaMast model AM2 is a rugged, lightweight, man-portable, aluminum tripod mast designed for rapid payload deployment. The AM2 is extremely flexible and reliable and is capable of elevating multiple devices on a single mast.

PAYLOAD DEPLOYMENT OPTIONS

1. The EZ Raze™ system with cable winching device and safety brake enables the user to lift and lower heavier payloads in a safe and controlled manner without disassembling the mast system.
2. The mast tube lift winch provides a mechanical assist for the lifting of the mast tubes for heavier payloads.
3. The user is also able to elevate the mast tubes and payload by breach loading the tubes through the tripod center collar.

ESSENTIAL FEATURES

- Rapid set-up
 - Includes a tripod with two (2) built-in levels and large no-slip adjustment knobs that are easy to operate. Interlocking mast tubes allow for directional adjustment of the payload.
- Flexible
 - A variety of payload adaptors and accessories are available to accomplish diverse missions.
- Simple
 - No tools or special training are needed for deployment.
- Rugged
 - Designed to meet MIL-STD-810 for use in a variety of harsh environments.
- Durable
 - Components are constructed of aluminum and stainless steel and are covered by a two (2) year warranty.
- Complete system
 - AM2 system includes all components needed to safely deploy rated payload at selected height.
- Transportable
 - Every mast system comes with a rugged wheeled transport bag designed for easy unloading and loading.



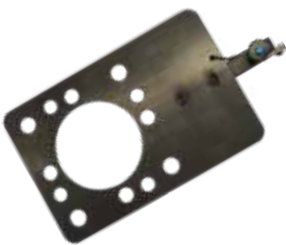
AM2 with EZ Raze Payload Elevation System

Easily elevate and lower multiple antennas and sensors

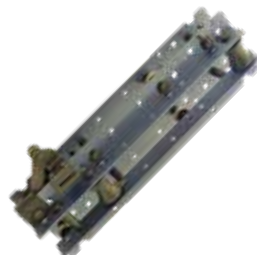


AM2 with Mast Tube Lift Winch

A full range of interchangeable accessories and payload adaptors are available for the AntennaMast



Nato Plate



EZ-Raze



Dual, Tri & Quad Arm Collar



Bolster Plate

See willburt.com for complete model range

SPECIFICATIONS

AM2

Height (m / ft.)	Model #	Deployable Load (kg / lb.)	Deployment Method	Deployment Time	System Weight (kg / lb.)	Guying (Primary / Secondary)	Wind Survival Speed (km/h / mph)
15 / 49.2	715061500	9.1 / 20	Manual	20-30 (2-4 persons)	47 / 103.6	Top / Mid Guying Optional	113 / 70 @ 4 sq. ft.
14 / 45.9	715061400	11.3 / 25	Manual	15-20 (1-3 persons)	45.6 / 100.5	Top / Mid Guying Optional	113 / 70 @ 4 sq. ft.
13 / 42.7	715061300	13.6 / 30	Manual	15-20 (1-3 persons)	44 / 97	Top / Mid Guying Optional	113 / 70 @ 4 sq. ft.
12 / 39.4	715061200	15.9 / 35	Manual	15-20 (1-3 persons)	42.5 / 93.8	Top / Mid Guying Optional	113 / 70 @ 4 sq. ft.
11 / 36.1	715061100	18.1 / 40	Manual	15-20 (1-3 persons)	41.1 / 90.5	Top / Mid Guying Optional	113 / 70 @ 4 sq. ft.
10 / 32.8	715061000	22.7 / 50	Manual	15-18 (1-3 persons)	39.6 / 87.3	Top / Mid Guying Optional	113 / 70 @ 6 sq. ft.
9 / 29.5	715060900	24.9 / 55	Manual	15-18 (1-3 persons)	38.1 / 84	Top	113 / 70 @ 6 sq. ft.
8 / 26.2	715060800	24.9 / 55	Manual	15-18 (1-3 persons)	36.7 / 80.8	Top	113 / 70 @ 6 sq. ft.
7 / 23	715060700	27.2 / 60	Manual	10-18 (1-2 persons)	35.2 / 77.6	Top	113 / 70 @ 6 sq. ft.
6 / 19.7	715060600	27.2 / 60	Manual	10-18 (1-2 persons)	33.7 / 74.3	Top	113 / 70 @ 6 sq. ft.
5 / 16.4	715060500	29.5 / 65	Manual	5-10 (1-2 persons)	32.2 / 71	Top	113 / 70 @ 6 sq. ft.
4 / 13.1	715060400	34 / 70	Manual	5-10 (1-2 persons)	30.8 / 67.8	Top	113 / 70 @ 6 sq. ft.
3 / 9.8	715060300	38.6 / 85	Manual	5-10 (1-2 persons)	29.3 / 64.6	Top	113 / 70 @ 6 sq. ft.
2 / 6.6	715060200	45.4 / 100	Manual	5-10 (1-2 persons)	27.8 / 61.3	Top	113 / 70 @ 6 sq. ft.

AM2 with Mast Tube Lift Winch

Height (m / ft.)	Model #	Deployable Load (kg / lb.)	Deployment Method	Deployment Time	System Weight (kg / lb.)	Guying (Primary / Secondary)	Wind Survival Speed (km/h / mph)
15 / 49.2	715071500	9.1 / 20	Lift Winch	20-30 (2-4 persons)	50.2 / 110.6	Top / Mid Guying Optional	113 / 70 @ 4 sq. ft.
14 / 45.9	715071400	11.3 / 25	Lift Winch	15-20 (1-3 persons)	48.8 / 107.5	Top / Mid Guying Optional	113 / 70 @ 4 sq. ft.
13 / 42.7	715071300	13.6 / 30	Lift Winch	15-20 (1-3 persons)	47.4 / 104.5	Top / Mid Guying Optional	113 / 70 @ 4 sq. ft.
12 / 39.4	715071200	15.9 / 35	Lift Winch	15-20 (1-3 persons)	45.7 / 100.8	Top / Mid Guying Optional	113 / 70 @ 4 sq. ft.
11 / 36.1	715071100	18.1 / 40	Lift Winch	15-20 (1-3 persons)	44.2 / 97.5	Top / Mid Guying Optional	113 / 70 @ 4 sq. ft.
10 / 32.8	715071000	22.7 / 50	Lift Winch	15-18 (1-3 persons)	42.8 / 94.3	Top / Mid Guying Optional	113 / 70 @ 6 sq. ft.
9 / 29.5	715070900	24.9 / 55	Lift Winch	15-18 (1-3 persons)	41.3 / 91	Top	113 / 70 @ 6 sq. ft.
8 / 26.2	715070800	24.9 / 55	Lift Winch	15-18 (1-3 persons)	39.8 / 87.8	Top	113 / 70 @ 6 sq. ft.
7 / 23	715070700	27.2 / 60	Lift Winch	10-18 (1-2 persons)	38.4 / 84.6	Top	113 / 70 @ 6 sq. ft.
6 / 19.7	715070600	27.2 / 60	Lift Winch	10-18 (1-2 persons)	36.9 / 81.3	Top	113 / 70 @ 6 sq. ft.
5 / 16.4	715070500	29.5 / 65	Lift Winch	5-10 (1-2 persons)	35.4 / 78	Top	113 / 70 @ 6 sq. ft.
4 / 13.1	715070400	34 / 75	Lift Winch	5-10 (1-2 persons)	33.9 / 74.8	Top	113 / 70 @ 6 sq. ft.
3 / 9.8	715070300	38.6 / 85	Lift Winch	5-10 (1-2 persons)	32.5 / 71.6	Top	113 / 70 @ 6 sq. ft.
2 / 6.6	715070200	45.4 / 100	Lift Winch	5-10 (1-2 persons)	31 / 68.3	Top	113 / 70 @ 6 sq. ft.

AM2 with EZ Raze Payload Elevation System

Height (m / ft.)	Model #	Deployable Load (kg / lb.)	Deployment Method	Deployment Time	System Weight (kg / lb.)	Guying (Primary / Secondary)	Wind Survival (km/h / mph)
15 / 49.2	715191500	22.7 / 50	Carriage	20-30 (2-4 persons)	52.4 / 115.6	Top	113 / 70 @ 1 sq. ft.
14 / 45.9	715191400	24.9 / 55	Carriage	15-18 (1-3 persons)	51 / 112.5	Top	113 / 70 @ 2 sq. ft.
13 / 42.7	715191300	27.2 / 60	Carriage	15-18 (1-3 persons)	49.5 / 109.1	Top	113 / 70 @ 3 sq. ft.
12 / 39.4	715191200	29.5 / 65	Carriage	15-18 (1-3 persons)	48 / 105.9	Top	113 / 70 @ 4 sq. ft.
11 / 36.1	715191100	31.8 / 70	Carriage	15-18 (1-3 persons)	46.5 / 102.6	Top	113 / 70 @ 4 sq. ft.
10 / 32.8	715191000	34 / 75	Carriage	15-18 (1-3 persons)	45.1 / 99.4	Top	113 / 70 @ 6 sq. ft.
9 / 29.5	715190900	34 / 75	Carriage	15-18 (1-3 persons)	43.6 / 96.1	Top	113 / 70 @ 6 sq. ft.
8 / 26.2	715190800	34 / 75	Carriage	15-18 (1-3 persons)	42.1 / 92.9	Top	113 / 70 @ 6 sq. ft.
7 / 23	715190700	34 / 75	Carriage	10-18 (1-2 persons)	40.6 / 89.6	Top	113 / 70 @ 6 sq. ft.
6 / 19.7	715190600	34 / 75	Carriage	10-18 (1-2 persons)	39.2 / 86.4	Top	113 / 70 @ 6 sq. ft.
5 / 16.4	715190500	34 / 75	Carriage	5-10 (1-2 persons)	37.7 / 83.1	Top	113 / 70 @ 6 sq. ft.
4 / 13.1	715190400	34 / 75	Carriage	5-10 (1-2 persons)	36.2 / 79.9	Top	113 / 70 @ 6 sq. ft.
3 / 9.8	715190300	34 / 75	Carriage	5-10 (1-2 persons)	34.7 / 76.6	Top	113 / 70 @ 6 sq. ft.

COMMUNICATIONS

EXPEDITION SERIES

The lightest, most stable, single-man portable field mast in the world.

The Will-Burt Expedition Series offers a variety of added features for increased performance and convenience. The system includes a 6 in. (150 mm) diameter payload adapter. The Ranger™ Mast has a large tripod base, making the mast very stable. It is erected with 4 ft. (1.2m) tube sections to heights from 8 to 60 ft. (2.5 to 18.3 m). A custom payload interface can be designed to fit specific needs. The Expedition Series tripod and mast are constructed of carbon composite material.

ESSENTIAL FEATURES

- Lighter weight than aluminum
 - Easier to transport and deploy
- Stronger
 - More durable - won't bend or break
- Stiffer
 - More stable for payloads
- Quicker, easier set-up and retraction
 - Faster deployment
- Easier transportability
 - Two compact transport pack options allow you to select the best one to fit your deployment needs
- Large, adjustable Tripod
- Friction Locks for height adjustment
- Ergonomic Tube Lifter
- Two Highly Visible Bubble Levels



A full range of interchangeable accessories and payload adaptors are available for the Expedition Series

See willburt.com for complete model range



Swivel 4-point Guy Collar



Rigid Guy Collar



EZ-Raze



Cup Holder

SPECIFICATIONS

Ranger Mast

Height (m / ft.)	Model #	Deployable Load (kg / lb.)	Deployment Method	Deployment Time	System Weight (kg / lb.)	Guying (Primary / Secondary)	Wind Survival (km/h / mph)
18.3 / 60	714076000	2.3 / 5	Manual	20-30 (2-4 persons)	40.8 / 90	Top / Mid Guying Optional	113 / 70 @ 2 sq. ft.
17.1 / 56	714075600	2.3 / 5	Manual	20-30 (2-4 persons)	39.5 / 87	Top / Mid Guying Optional	113 / 70 @ 2 sq. ft.
15.8 / 52	714075200	4.5 / 10	Manual	15-20 (1-3 persons)	38.1 / 84	Top / Mid Guying Optional	113 / 70 @ 2 sq. ft.
14.6 / 48	714074800	4.5 / 10	Manual	15-20 (1-3 persons)	37.2 / 82	Top / Mid Guying Optional	113 / 70 @ 2 sq. ft.
13.4 / 44	714074400	6.8 / 15	Manual	15-20 (1-3 persons)	35.8 / 79	Top / Mid Guying Optional	113 / 70 @ 2 sq. ft.
12.2 / 40	714074000	9.1 / 20	Manual	15-18 (1-3 persons)	33.1 / 73	Top / Mid Guying Optional	113 / 70 @ 2 sq. ft.
11 / 36	714073600	11.3 / 25	Manual	15-18 (1-3 persons)	31.8 / 70	Top / Mid Guying Optional	113 / 70 @ 2 sq. ft.
9.8 / 32	714073200	13.6 / 30	Manual	15-18 (1-3 persons)	30.8 / 68	Top	113 / 70 @ 4 sq. ft.
8.5 / 28	714072800	15.9 / 35	Manual	10-18 (1-2 persons)	29.5 / 65	Top	113 / 70 @ 4 sq. ft.
7.3 / 24	714072400	18.1 / 40	Manual	10-18 (1-2 persons)	28.6 / 63	Top	113 / 70 @ 4 sq. ft.
6.1 / 20	714072000	18.1 / 40	Manual	5-10 (1-2 persons)	27.2 / 60	Top	113 / 70 @ 4 sq. ft.
4.9 / 16	714071600	18.1 / 40	Manual	5-10 (1-2 persons)	26.3 / 58	Top	113 / 70 @ 4 sq. ft.
3.7 / 12	714071200	18.1 / 40	Manual	5-10 (1-2 persons)	25.4 / 56	Top	113 / 70 @ 4 sq. ft.

Ranger Mast with EZ Raze Payload Elevation System

Height (m / ft.)	Model #	Deployable Load (kg / lb.)	Deployment Method	Deployment Time	System Weight (kg / lb.)	Guying (Primary / Secondary)	Wind Survival (km/h / mph)
18.3 / 60	714176000	13.6 / 30	Carriage	20-30 (2-4 persons)	52.2 / 115	Top	80 / 50 @ 1 sq. ft.
17.1 / 56	714175600	15.9 / 35	Carriage	20-30 (2-4 persons)	51.3 / 113	Top	96 / 60 @ 1 sq. ft.
15.8 / 52	714175200	15.9 / 35	Carriage	15-20 (1-3 persons)	49.9 / 110	Top	96 / 60 @ 1.5 sq. ft.
14.6 / 48	714174800	18.1 / 40	Carriage	15-20 (1-3 persons)	49 / 108	Top	113 / 70 @ 1.5 sq. ft.
13.4 / 44	714174400	18.1 / 40	Carriage	15-20 (1-3 persons)	47.6 / 105	Top	113 / 70 @ 2 sq. ft.
12.2 / 40	714174000	18.1 / 40	Carriage	15-18 (1-3 persons)	44.9 / 99	Top	113 / 70 @ 3 sq. ft.
11 / 36	714173600	18.1 / 40	Carriage	15-18 (1-3 persons)	43.5 / 96	Top	113 / 70 @ 4 sq. ft.
9.8 / 32	714173200	18.1 / 40	Carriage	15-18 (1-3 persons)	42.6 / 94	Top	113 / 70 @ 4 sq. ft.
8.5 / 28	714172800	18.1 / 40	Carriage	10-18 (1-2 persons)	41.3 / 91	Top	113 / 70 @ 4 sq. ft.
7.3 / 24	714172400	18.1 / 40	Carriage	10-18 (1-2 persons)	40.4 / 89	Top	113 / 70 @ 4 sq. ft.
6.1 / 20	714172000	18.1 / 40	Carriage	5-10 (1-2 persons)	39 / 86	Top	113 / 70 @ 4 sq. ft.
4.9 / 16	714171600	18.1 / 40	Carriage	5-10 (1-2 persons)	38.1 / 84	Top	113 / 70 @ 4 sq. ft.
3.7 / 12	714071200	18.1 / 40	Carriage	5-10 (1-2 persons)	37.2 / 82	Top	113 / 70 @ 4 sq. ft.



COMMUNICATIONS

CARBON/GLASS FIBER STRAP DRIVE MODEL - FIELD DEPLOYED

The QEAM MTS Series from Will-Burt is a highly transportable field mast ideally suited for antennas and other payloads that require stable elevation from 3 to 15 meters. High pointing accuracy is assured with vertical keyways built into the carbon/glass fiber tubes. The MTS is elevated and retracted by strong straps that are driven manually with a manual crank system or an optional motorized system.

The QEAM MTS meets the environmental requirements of MIL-STD-810 and will exceed the requirements of the mission.

Q★E★A★M
QUICK ERECTING ANTENNA MAST
MTS



ESSENTIAL FEATURES

- Lightweight Telescopic Mast System
 - Composite mast sections
- Minimal payload twist
 - Keyways improve pointing accuracy
- Fast and safe deployment
 - Hand-operated lift system
 - Optional electric lift system
- Position payload at any height
 - Winch locks mast in place
- Complete Elevation System
 - Includes all items needed to deploy
- Meets MIL-STD-810 Environmental
- Voltage - 24 VDC



Manual Hand Crank



Automatic Electric Motor



MTS Accessory Kit

SPECIFICATIONS

Automatic Electric Motor	3MTS-A3-1.3	4MTS-A4-1.45	6MTS-A5-1.75	8MTS-A6-2	10MTS-A7-2.2	12MTS-A7-2.45	15MTS-A7-2.9
Extended Height (ft. / m)	9.8 / 3	13.1 / 4	19.7 / 6	26.3 / 8	32.8 / 10	39.4 / 12	49.2 / 15
Nested Height (ft. / m)	4.3 / 1.3	4.8 / 1.45	5.7 / 1.75	6.6 / 2	7.4 / 2.2	8 / 2.45	9.5 / 2.9
Number of Sections	3	4	5	6	7	7	7
Payload Capacity (lb / kg)	154 / 70	143 / 65	132 / 60	121 / 55	99 / 45	88 / 40	66 / 30
Maximum Wind Area (ft. ² / m ²)	2.6 / 0.8	2.6 / 0.8	2.6 / 0.8	2.6 / 0.8	2.6 / 0.8	2.6 / 0.8	2.6 / 0.8
Maximum Survival Wind Speed (mph / km/h)	99 / 160	99 / 160	99 / 160	99 / 160	99 / 160	99 / 160	99 / 160
Outer Section Diameter (in. / mm)	ø5 / 126	ø5 / 126	ø5 / 126	ø5 / 126	ø5 / 126	ø5 / 126	ø5 / 126
Voltage (VDC)	24	24	24	24	24	24	24
Mast Only Weight (lb / kg)	42 / 19	53 / 24	64 / 29	75 / 34	86 / 39	95 / 43 kg	108 / 49
Accessories Weight with Motor (lb / kg)	75 / 34	75 / 34	75 / 34	75 / 34	95 / 43	95 / 43	95 / 43

Manual Hand Crank	3MTS-M3-1.3	4MTS-M4-1.45	6MTS-M5-1.75	8MTS-M6-2	10MTS-M7-2.2	12MTS-M7-2.45	15MTS-M7-2.9
Extended Height (ft. / m)	9.8 / 3	13.1 / 4	19.7 / 6	26.3 / 8	32.8 / 10	39.4 / 12	49.2 / 15
Nested Height (ft. / m)	4.3 / 1.3	4.8 / 1.45	5.7 / 1.75	6.6 / 2	7.4 / 2.2	8 / 2.45	9.5 / 2.9
Number of Sections	3	4	5	6	7	7	7
Payload Capacity (lb / kg)	154 / 70	143 / 65	132 / 60	121 / 55	99 / 45	88 / 40	66 / 30
Maximum Wind Area (ft. ² / m ²)	2.6 / 0.8	2.6 / 0.8	2.6 / 0.8	2.6 / 0.8	2.6 / 0.8	2.6 / 0.8	2.6 / 0.8
Maximum Survival Wind Speed (mph / km/h)	99 / 160	99 / 160	99 / 160	99 / 160	99 / 160	99 / 160	99 / 160
Outer Section Diameter (in. / mm)	ø5 / 126	ø5 / 126	ø5 / 126	ø5 / 126	ø5 / 126	ø5 / 126	ø5 / 126
Mast Only Weight (lb / kg)	42 / 19	53 / 24	64 / 29	75 / 34	86 / 39	95 / 43	108 / 49
Accessories Weight (Including Manual Assembly) (lb / kg)	71 / 32	71 / 32	71 / 32	71 / 32	90 / 41	90 / 41	90 / 41

VEHICLE DEPLOYED

The QEAM MTS-Vehicle Series from Will-Burt is a highly transportable telescopic mast ideally suited for deploying antennas and other payloads directly from a vehicle or trailer platform. High pointing accuracy is assured with 4 vertical keyways built into the carbon/glass fiber tubes. The MTS-V is elevated and retracted by strong straps that are driven manually with a manual crank system or a motorized system. Added flexibility is available with optional field deployment kits.

The QEAM MTS-V meets the environmental requirements of MIL-STD-810 and will exceed the requirements of the mission.

Not to be used for On-The-Move Applications.

Q•E•A•M
QUICK ERECTING ANTENNA MAST
MTS-V



ESSENTIAL FEATURES

- Designed for Vehicle / Trailer Installation
- The QEAM MTS-V Series assures high pointing accuracy with 4 vertical keyways built into the carbon/glass fiber tubes
- Composite mast sections
- Minimal payload twist
- Keyways improve pointing accuracy
- Fast and safe deployment
- Hand-operated lift system
- Optional electric lift system
- Position payload at any height
- Winch locks mast in place
- Includes all items needed to deploy
- Meets MIL-STD-810 Environmental
- Voltage - 28V (20-32V)

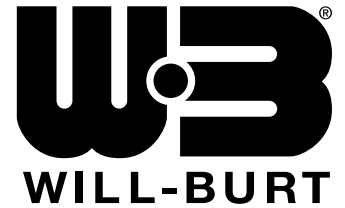


SPECIFICATIONS

Automatic Electric Motor	3MTSV-A6-1.1	4MTSV-A6-1.3	5MTSV-A7-1.45	6MTSV-A7-1.6	8MTSV-A7-1.8
Extended Height (ft. / m)	9.5 / 2.9	12.8 / 3.9	16 / 4.9	19 / 5.9	26 / 7.9
Nested Height (ft. / m)	3.6 / 1.1	4.3 / 1.3	4.8 / 1.45	5.2 / 1.6	5.9 / 1.8
Number of Sections	6	6	7	7	7
Payload Capacity (lb / kg)	121 / 55	121 / 55	110 / 50	99 / 45	88 lb / 40
Maximum Wind Area (ft. ² / m ²)	0.8 / 0.25	0.8 / 0.25	0.8 / 0.25	0.8 / 0.25	0.8 / 0.25
Maximum Survival Wind Speed (mph / km/h)	75 / 120	75 / 120	75 / 120	75 / 120	75 / 120
Outer Section Diameter (in. / mm)	ø5 / 126	ø5 / 126	ø5 in. / 126mm	ø5 / 126	ø5 / 126
Voltage (V)	28 (20-32)	28 (20-32)	28 (20-32)	28 (20-32)	28 (20-32)
Mast Only Weight (lb / kg)	64 / 29	75 / 34	84 / 38	95 / 43	108 / 49
Accessories Weight with Motor (lb / kg)	20 / 9	20 / 9	20 / 9	20 / 9	20 / 9

Manual Hand Crank	3MTSV-M6-1.1	4MTSV-M6-1.3	5MTSV-M7-1.45	6MTSV-M7-1.6	8MTSV-M7-1.8
Extended Height (ft. / m)	9.5 / 2.9	12.8 / 3.9	16 / 4.9	19 / 5.9	26 / 7.9
Nested Height (ft. / m)	3.6 / 1.1	4.3 / 1.3	4.8 / 1.45	5.2 / 1.6	5.9 / 1.8
Number of Sections	6	6	7	7	7
Payload Capacity (lb / kg)	121 / 55	121 / 55	110 / 50	99 / 45	88 lb / 40
Maximum Wind Area (ft. ² / m ²)	0.8 / 0.25	0.8 / 0.25	0.8 / 0.25	0.8 / 0.25	0.8 / 0.25
Maximum Survival Wind Speed (mph / km/h)	75 / 120	75 / 120	75 / 120	75 / 120	75 / 120
Outer Section Diameter (in. / mm)	ø5 / 126	ø5 / 126	ø5 / 126	ø5 / 126	ø5 / 126
Mast Only Weight (lb / kg)	60 / 27	71 / 32	79 / 36	88 / 40	101 / 46
Accessories Weight (lb / kg)	13 / 6	13 / 6	13 / 6	13 / 6	13 / 6

CONTACT YOUR SALES REPRESENTATIVE TODAY



Contact Us
Complete a Contact Form

**WILL-BURT NORTH AMERICA
WORLD HEADQUARTERS**

401 Collins Boulevard, Orrville, OH USA 44667
Telephone: +1 330 682 7015
Mast Customer Service: +1 330 684 4000
Fax: +1 330 684 1190
Email: info@willburt.com

**WILL-BURT ASIA
SINGAPORE SALES OFFICE**

1 Fullerton Road, #02-01 One Fullerton,
Singapore 049213
Telephone: +65 6832 5689
Fax: +65 6722 0664 / Email: info@willburt.com

**INTEGRATED TOWER SYSTEMS
A WILL-BURT COMPANY**

2703 Dawson Road
Tulsa, OK 74110
Telephone: +1 800 850 8535
Fax: +1 918 749 8537
Email: programs@itstowers.com

**WILL-BURT
GERMANY**

Fischergasse 25
D-91344 Waischenfeld, Germany
Telephone: +49 9202 180
Fax: +49 9202 1811
Email: info@willburt.com

**WILL-BURT
TÜRKİYE**

Ahi Evran OSB Mahallesi,
Nahcivan Caddesi, No: 8/2, Sincan, Ankara 06935
Telephone: +90 535 662 9060 / Fax: +90 312 502 6970
Email: info@willburt.com

**WILL-BURT
UNITED KINGDOM**

Unit 5b, Station Approach
Four Marks, Alton Hampshire, GU34 5HN,
United Kingdom
Telephone: +44 (0) 1403 265532
Fax: +44 (0) 1403 259072 / Email: info@willburt.com

**CLARK MASTS
A WILL-BURT COMPANY**

18-20 Ringwood Road, Binstead, Isle of Wight, PO33 3PA, England
Telephone: +44 (0) 1983 563691/567090
Fax: +44 (0) 1983 566643/811157
E-mail: sales@clarkmasts.com

The Will-Burt Company, headquartered in Orrville, Ohio, USA, is the world's premier manufacturer of mobile telescoping masts, towers and pan and tilt positioners. We offer virtually every mobile payload elevation and integration solution for defense, government, first responders, cellular and mobile, broadcast, energy production and other markets. Will-Burt also offers contract manufacturing, metal fabrication, powder-coating, and rapid prototyping services. Will-Burt is an international company with offices and manufacturing in the USA, England, and Germany along with offices in Singapore and a joint venture in Turkey. All Will-Burt Company manufacturing locations are backed by a certified ISO 9001:2015 Quality Management System. Incorporated in 1918, Will-Burt is 100% employee-owned and is classified as a small business.

ISO 9001:2015



© February, 2024 The Will-Burt Company

INNOVATION ELEVATED®