

# The Will-Burt Company's Strongest

## ULTRA-HEAVY DUTY PNEUMATIC MAST

### Designed to Save You Time and Money

*No Need for a Cherry Picker – Ultra can lift your largest antennas!  
Ultimate Unguyed Performance – Reduces space needed for set-up*

#### STRONG

- Elevates heavier loads with greater wind sail area
- Greater unguyed performance
- Shorter guy radius support requires less space

#### FAST & EFFICIENT

- Lower nested height eliminates the need for costly and complicated tilt systems
- Easier to deploy in urban areas
- Lightweight design allows for more COW and COLT payload space
- Safe long-term deployment with easy to operate positive locking pins

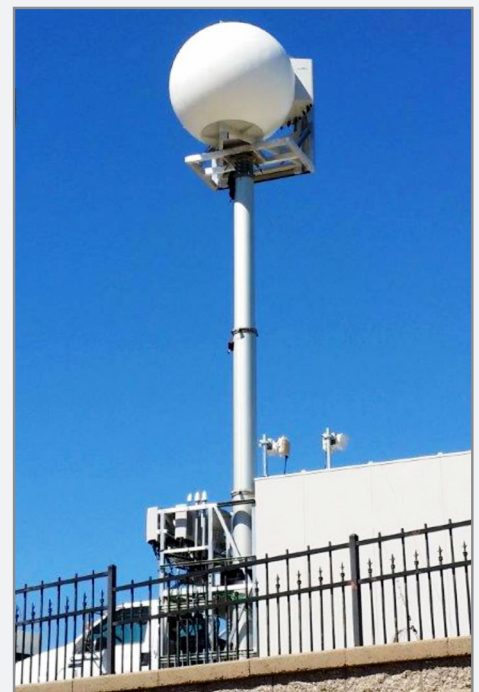
#### RELIABLE

- 5 year manufacturer warranty
- No maintenance required
- No hydraulic fluid concerns
- Designed and manufactured in the USA by the portable elevation experts - [The Will-Burt Company](#)

#### SPECIFICATIONS

Specifications	8-39	11.3-59	9.8-65.6	13-70	14.4-80
Payload Capacity*	980 lb / 444 kg	1200 lb / 544 kg	530 lb / 240 kg	1200 lb / 544 kg	1200 lb / 544 kg
Extended Height	39.3 ft. / 12 m	59 ft. / 18 m	65.6 ft. / 20 m	70 ft. / 21.3 m	80 ft. / 24.3 m
Nested Height	7.9 ft. / 2.4 m	11.3 ft. / 3.4 m	9.8 ft. / 3 m	13 ft. / 4 m	14.4 ft. / 4.4 m
Approximate Weight	607 lb / 275 kg	814 lb / 369 kg	852 lb / 387 kg	920 lb / 417 kg	1078 lb / 489 kg
Number of Sections	8	7	10	7	7
Tube Diameter	13.5 in. / 34.29 cm through 6.75 in. / 17.15 cm	13.5 in. / 34.29 cm through 7.5 in. / 19.05 cm	13.5 in. / 34.29 cm through 5.25 in. / 13.34 cm	13.5 in. / 34.29 cm through 7.5 in. / 19.05 cm	13.5 in. / 34.29 cm through 7.5 in. / 19.05 cm
Collar Type	Locking with Super Pins	Locking with Super Pins	Locking with Super Pins	Locking with Super Pins	Locking with Super Pins
Maximum Operating Pressure	35 psig (2.4 bar)	35 psig (2.4 bar)	35 psig (2.4 bar)	35 psig (2.4 bar)	35 psig (2.4 bar)

\*Capacity will be affected by wind sail area. Consult factory.



# CONTACT YOUR SALES REPRESENTATIVE TODAY

The Will-Burt Company, headquartered in Orrville, Ohio, USA, is the world's premier manufacturer of mobile telescoping masts, towers and pan and tilt positioners. We offer virtually every payload elevation and integration solution from the top brands; Will-Burt, GEROH, Integrated Tower Systems (ITS) and MAD – for defense, government, first responders, cellular, broadcast, energy production and other markets. Will-Burt also offers contract manufacturing, metal fabrication, powder-coating, and rapid prototyping services. All Will-Burt Company manufacturing locations are backed by a certified ISO 9001:2015 Quality Management System. Incorporated in 1918, Will-Burt is 100% employee-owned and is classified as a small business.



www.willburt.com

## UNITED STATES WORLD HEADQUARTERS

401 Collins Blvd  
Orrville, OH USA 44667  
Telephone: 330.682.7015  
Mast Customer Service: 330.684.4000  
Fax: 330.684.1190  
Email: info@willburt.com

## INTEGRATED TOWER SYSTEMS

A WILL-BURT COMPANY  
2703 Dawson Road, Tulsa, OK 74110  
Telephone: 800.850.8535  
Fax: 918.749.8537  
Email: programs@itstowers.com

## WILL-BURT EU

Unit 5b, Station Approach  
Four Marks, Alton Hampshire,  
GU34 5HN, United Kingdom  
Telephone: +44 (0) 1403 265532  
Fax: +44 (0) 1403 259072

## WILL-BURT TURKEY

2118. Cad. No: 4, B101  
Mustafa Kemal Mah. 06530 Çankaya  
Ankara, Turkey  
Telephone: +1 202 820 2184

## EUROPE GEROH

A Will-Burt Company  
Fischergasse 25  
91344 Waischenfeld, Germany  
Telephone: +49-9202-18-0  
Fax: +49-9202-18-11  
Email: info@geroh.com

## ASIA SINGAPORE SALES OFFICE

1 Fullerton Road,  
#02-01 One Fullerton,  
Singapore 049213  
Telephone: +65 6832 5689  
Fax: +65 6722 0664