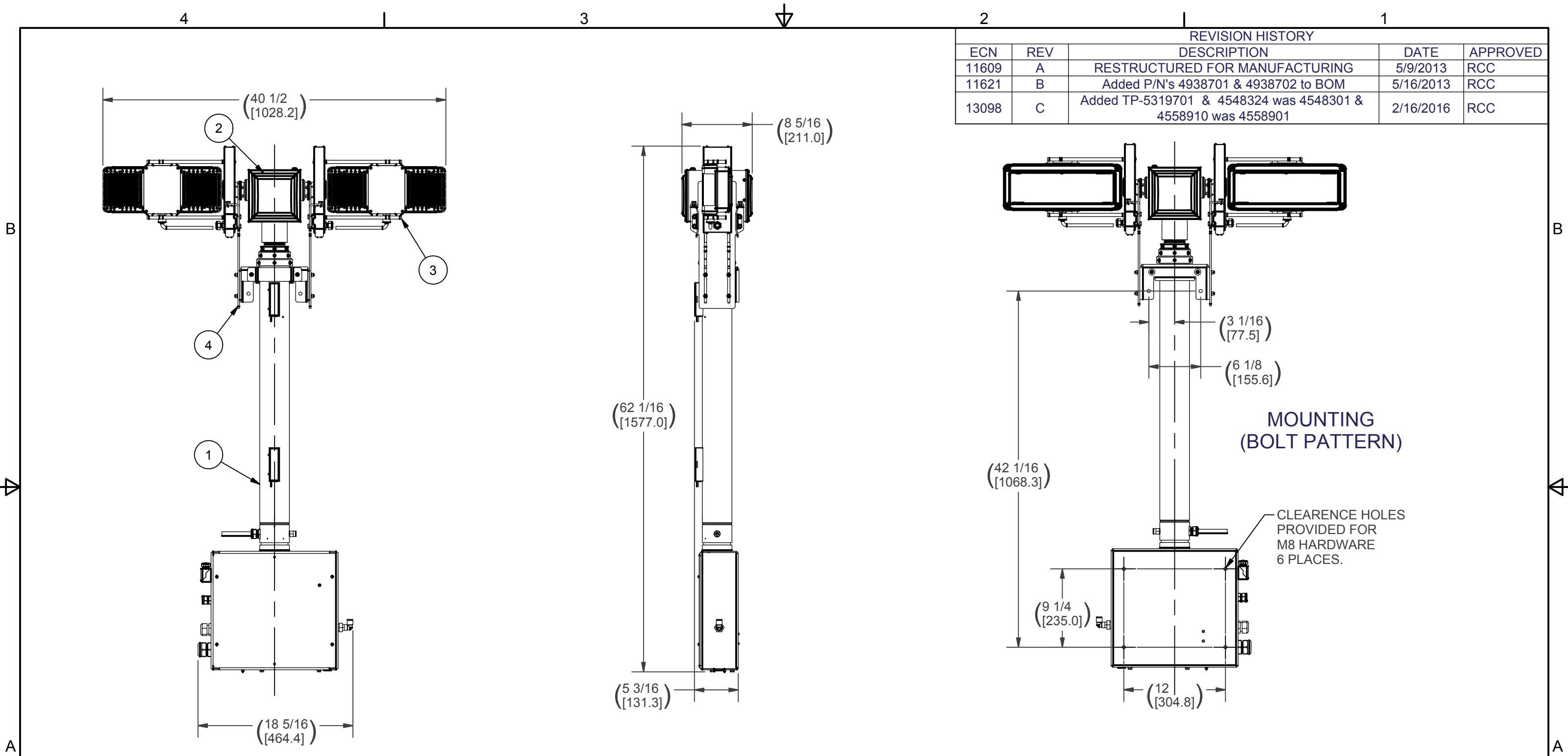
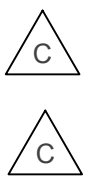


REVISION HISTORY				
ECN	REV	DESCRIPTION	DATE	APPROVED
11609	A	RESTRUCTURED FOR MANUFACTURING	5/9/2013	RCC
11621	B	Added P/N's 4938701 & 4938702 to BOM	5/16/2013	RCC
13098	C	Added TP-5319701 & 4548324 was 4548301 & 4558910 was 4558901	2/16/2016	RCC



BOM			
ITEM	QTY	PART NUMBER	DESCRIPTION
1	1	4936101	VRT BASE ASM, 2.3 STD
2	1	4548324	RCP , ASSEMBLY, NSC, LOOK-UP LIGHT
3	1	4889002	SPECTRA 460 (2X230W) 220VAC
4	1	4937301	SADDLE, NS COMPLETE
5	1	4558910	KIT, NSC LABEL, VERTICAL COMPLETE
6	1	TP-5319701	OPERATOR'S MANUAL
7	1	4938701	CARTON W/FOAM FOR VRT7.5 STD
8	1	4938702	PALLET/ VRT7.5 STD



APPROX. WT:71.5 lbmass
THIRD ANGLE PROJECTION

UNLESS OTHERWISE SPECIFIED DIMENSIONS ARE IN INCHES.
 TOLERANCES ON DECIMALS ANGLES
 0 = ± 0.030 ± 1/2°
 00 = ± 0.010
 000 = ± 0.005
 FRACTIONAL ± 1/64"
 1. ALL INSIDE EDGES TO HAVE .005" TO .035" FILLETS.
 2. ALL OUTSIDE EDGES TO HAVE .005" TO .015" CHAMFER OR RADIUS.
 125° ON ALL MACHINED SURFACES

PROPRIETARY AND CONFIDENTIAL
 THE INFORMATION CONTAINED IN THIS DRAWING IS THE SOLE PROPERTY OF THE WILL-BURT COMPANY ANY REPRODUCTION IN PART OR WHOLE WITHOUT THE WRITTEN PERMISSION OF THE WILL-BURT COMPANY IS PROHIBITED.

APPROVALS	DATE
DRAWN RCC	4/24/2013
CHECKED	

W3 AN EMPLOYEE OWNED COMPANY
 WILL-BURT ORRVILLE, OH

TITLE
VRT-7.5 ASM 460W (2)X230 SPC 220VAC

SIZE B	DWG NO 720087041	REV C
PN: 720087041	SHEET 1 OF 1	