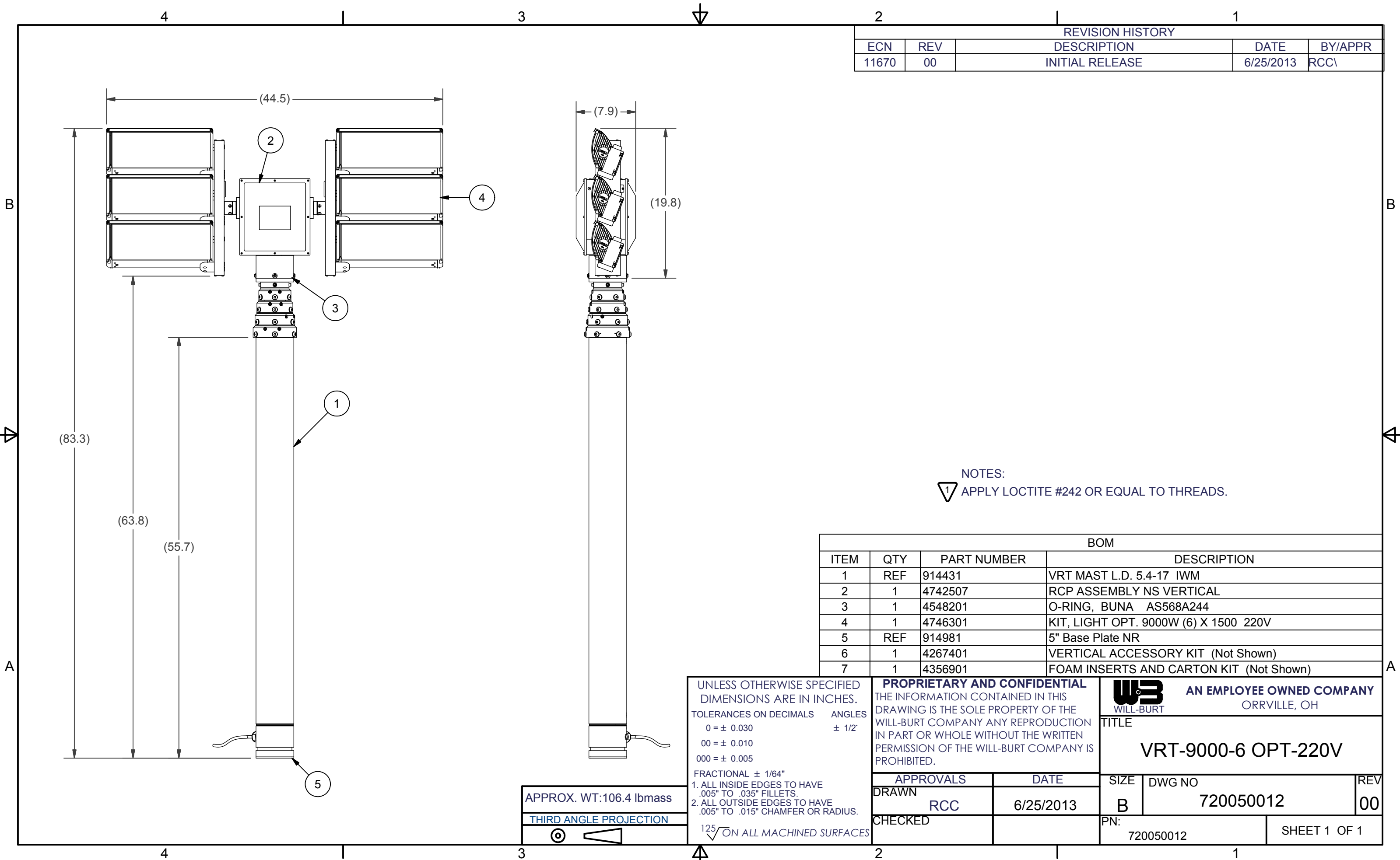


REVISION HISTORY				
ECN	REV	DESCRIPTION	DATE	BY/APPR
11670	00	INITIAL RELEASE	6/25/2013	RCC\



NOTES:  
 1 APPLY LOCTITE #242 OR EQUAL TO THREADS.

BOM			
ITEM	QTY	PART NUMBER	DESCRIPTION
1	REF	914431	VRT MAST L.D. 5.4-17 IWM
2	1	4742507	RCP ASSEMBLY NS VERTICAL
3	1	4548201	O-RING, BUNA AS568A244
4	1	4746301	KIT, LIGHT OPT. 9000W (6) X 1500 220V
5	REF	914981	5" Base Plate NR
6	1	4267401	VERTICAL ACCESSORY KIT (Not Shown)
7	1	4356901	FOAM INSERTS AND CARTON KIT (Not Shown)

UNLESS OTHERWISE SPECIFIED  
 DIMENSIONS ARE IN INCHES.  
 TOLERANCES ON DECIMALS    ANGLES  
 0 = ± 0.030                    ± 1/2°  
 00 = ± 0.010  
 000 = ± 0.005  
 FRACTIONAL ± 1/64"  
 1. ALL INSIDE EDGES TO HAVE  
 .005" TO .035" FILLETS.  
 2. ALL OUTSIDE EDGES TO HAVE  
 .005" TO .015" CHAMFER OR RADIUS.  
 125° ON ALL MACHINED SURFACES

APPROX. WT:106.4 lbmass

THIRD ANGLE PROJECTION

**PROPRIETARY AND CONFIDENTIAL**  
 THE INFORMATION CONTAINED IN THIS  
 DRAWING IS THE SOLE PROPERTY OF THE  
 WILL-BURT COMPANY ANY REPRODUCTION  
 IN PART OR WHOLE WITHOUT THE WRITTEN  
 PERMISSION OF THE WILL-BURT COMPANY IS  
 PROHIBITED.

**W3** AN EMPLOYEE OWNED COMPANY  
 WILL-BURT                    ORRVILLE, OH

TITLE  
**VRT-9000-6 OPT-220V**

APPROVALS	DATE
DRAWN RCC	6/25/2013
CHECKED	

SIZE	DWG NO	REV
B	720050012	00
PN: 720050012		SHEET 1 OF 1