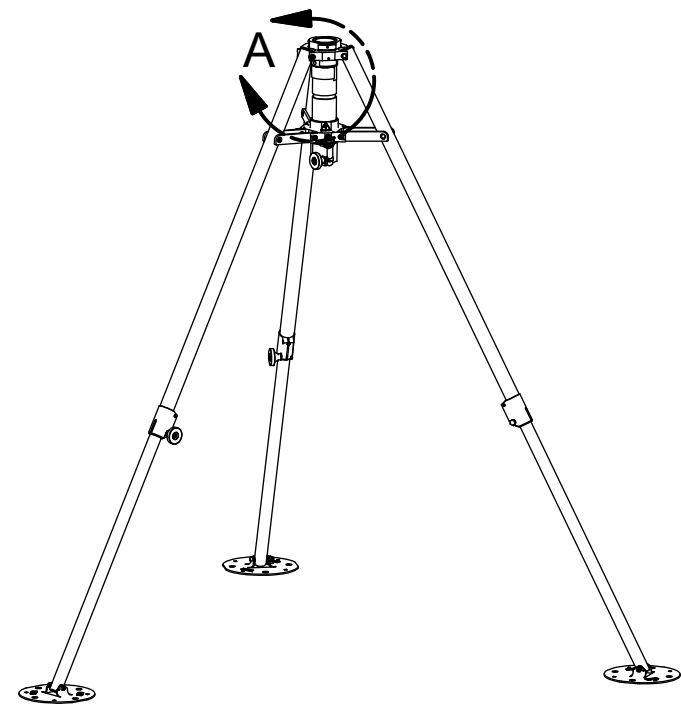
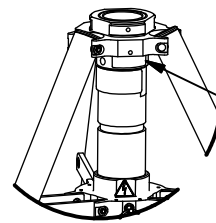


REVISION HISTORY				
ECN	REV	DESCRIPTION	DATE	BY/APPR
12275	00	INITIAL RELEASE	7/1/2014	KV/
13238	A	ADD: 5012501 - STAKE PULLER	5-25-2016	KV/



TRIPOD



LABEL - SERIAL NUMBER  
EVENLY PLACED  
ON THIS CENTRAL TUBE

DETAIL A

\*MANUAL NOT SHOWN\*

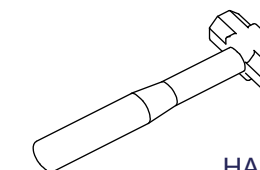
\*BAG NOT SHOWN\*  
(SHEET 2 OF 3)



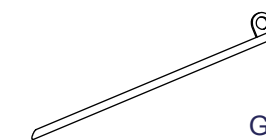
MANUAL LIFT



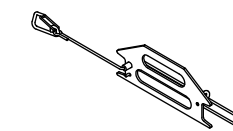
STAKE PULLER



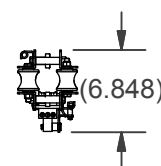
HAMMER



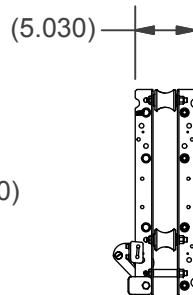
GUY STAKE



ROPE STAY



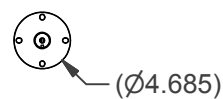
(6.848)



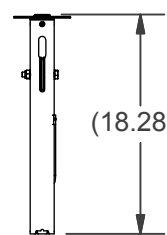
(5.030)

(17.250)

CARRIAGE  
ASSEMBLY

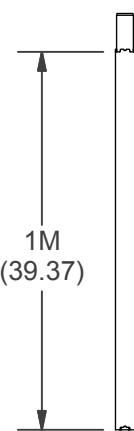


(Ø4.685)



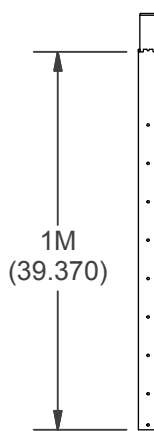
(18.280)

TOP TIP  
ASSEMBLY



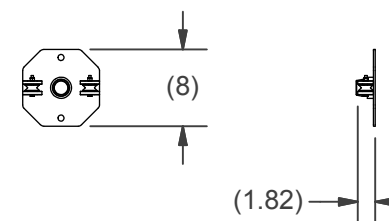
1M  
(39.37)

TUBE  
SECTION



1M  
(39.370)

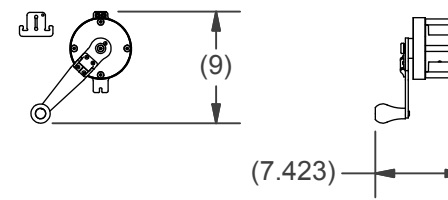
BASE TUBE



(8)

(1.82)

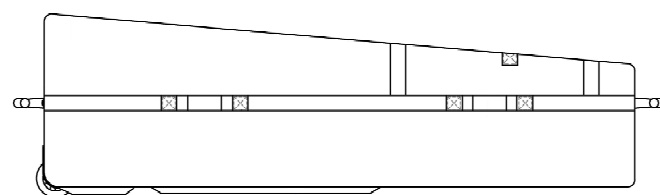
LIFT BASE PLATE  
ASSEMBLY



(9)

(7.423)

LIFT WINCH  
ASSEMBLY



ROLLER BAG  
(14 X 15 X 54 INCHES)

MATERIAL	-	UNLESS OTHERWISE SPECIFIED DIMENSIONS ARE IN INCHES. TOLERANCES ON DECIMALS    ANGLES 0 = ± 0.030                      ± 1/2° 00 = ± 0.015 000 = ± 0.005 FRACTIONAL ± 1/64"
FINISH	-	1. ALL INSIDE EDGES TO HAVE .005" TO .035" FILLETS. 2. ALL OUTSIDE EDGES TO HAVE .005" TO .015" CHAMFER OR RADIUS.
APPROX. WT:	- LB	125 √ ON ALL MACHINED SURFACES
THIRD ANGLE PROJECTION		

**PROPRIETARY AND CONFIDENTIAL**  
THE INFORMATION CONTAINED IN THIS  
DRAWING IS THE SOLE PROPERTY OF THE  
WILL-BURT COMPANY ANY REPRODUCTION  
IN PART OR WHOLE WITHOUT THE WRITTEN  
PERMISSION OF THE WILL-BURT COMPANY IS  
PROHIBITED.



AN EMPLOYEE OWNED COMPANY  
ORRVILLE, OH

TITLE  
**ANTENNA MAST EZ RAZE SYSTEM  
ALUM. NOTCH TUBE SET**

APPROVALS	DATE
DRAWN kvandegrift	6/16/2014
CHECKED	

SIZE	DWG NO	REV
B	<b>715190000</b>	A

PN: SEE CHART      SHEET 1 OF 3